



AUGUST 2018

RETAIL AVAILABILITIES ONNI GROUP





RICHMOND, BC

IMPERIAL LANDING

Address : Bayview Street
Contact : John Middleton

Company : Onni Group
Phone : 604.602.7711

BUILDING FEATURES

- High exposure retail landmark in Steveston Village
- Close proximity to Fisherman's Wharf
- Approximately 30 minute drive to Downtown Vancouver

AVAILABILITY

BUILDING 1 - 6,974 SF - Available immediately

BUILDING 3 - 1,789 SF - Available immediately

BUILDING 2 - 16,143 SF - Available immediately

BUILDING 4 - 6,027 SF - Available immediately



PORT MOODY, BC

SUTER BROOK VILLAGE



Address : 220 Brew Street
Contact : Gianni Laudisio

Company : Onni Group
Phone : 604.602.7711

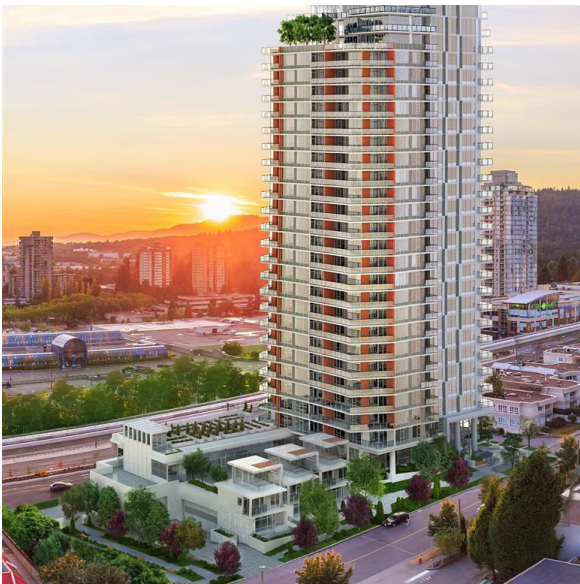
BUILDING FEATURES

- Retail opportunity in a 9-storey office building
- Walking distance from the Evergreen SkyTrain Line
- Join Thrifty's, TD, Vancity, Starbucks, and BC LDB
- Occupancy available immediately

AVAILABILITY

Up to 22,600 SF of retail - Available immediately

* Demisable into units of approximately 11,000 SF



COQUITLAM, BC

BROOKMERE



Address : 528 North Road
Contact : Gianni Laudisio

Company : Onni Group
Phone : 604.602.7711

BUILDING FEATURES

- New construction
- Ground floor retail
- Transit - oriented, at Lougheed Town Centre SkyTrain Station
- Occupancy approximately Q2 2019
- Unit equipped for full service restaurant

AVAILABILITY

CRU #1 - 2,552 SF - Available Q2 2019

CRU #4 - 2,482 SF -

LEASED

CRU #2 - 1,380 SF - Available Q2 2019

CRU #5 - 1,900 SF -

UNDER CONTRACT

CRU #3 - 3,247 SF -

LEASED



BURNABY, BC 3355 NORTH ROAD

Address : 3355 North Road

Contact : Wayne Tullis & Ashley Tullis

Company : MacDonald Realty

Phone : 604.931.1551

BUILDING FEATURES

- Located at the corner of North Road and Cameron Street
- Within close proximity to Lougheed SkyTrain Station
- Across the street from Lougheed Mall

AVAILABILITY

UNIT #150A - 3,032 SF - Available Immediately

*Fitted for a Sales Centre

UNIT #140 - 1,131 SF - Available Immediately

UNIT #170 - 5,258 SF - Available Immediately

UNIT #240 - 841 SF - Available Immediately

SURREY, BC CHARLETON PARK

Address : 15380 102A Avenue

Contact : Max Zessel

Company : Cushman & Wakefield

Phone : 604.681.3111

BUILDING FEATURES

- Ground floor retail in Guildford
- Supports 339 residential units
- Great exposure along 102A Avenue
- Close to Guildford Mall and amenities

AVAILABILITY

UNIT #101 - 1,725 SF - **UNDER CONTRACT**



PITT MEADOWS, BC MEADOWTOWN CENTRE

Address : 19800 Lougheed Highway

Contact : Jordan Curteanu

Company : Form Real Estate Advisors

Phone : 604.638.2124

BUILDING FEATURES

- Located adjacent to The Point in Manhattan Beach
- 6 floors of Class A office space in 2 towers
- Beautiful new tenant lounge and gym facility
- Highly creative office towers with a unique tenant mix

AVAILABILITY

UNIT #401 - 12,377 SF - Available immediately

* Last remaining unit!

*Unit can be demised





PORT COQUITLAM, BC FREMONT VILLAGE

FREMONT VILLAGE
SHOPPING CENTRE

Address : Lougheed Hwy & Maryhill Bypass Company : CBRE
Contact : Shane Epp Phone : 604.662.5187

BUILDING FEATURES

- 50-acre site neighbouring Costco, Home Depot, Save-On-Foods and many others
- Anchored by Walmart, Canadian Tire, Mark's Work Warehouse, Party City and Shoppers Drug Mart
- High traffic counts and all-directional access
- Will build to suit

AVAILABILITY

1,000 SF - 50,000 SF OPPORTUNITIES AVAILABLE



ETOBICOKE, ON WESTLAKE

WESTLAKE

Address : 2200 Lakeshore Blvd Company : CBRE
Contact : Brock Meddick & Michi Jameson Phone : 416.815.2305

BUILDING FEATURES

- Metro grocery and Shoppers Drug Mart anchors this retail
- Approximately 60,000 SF of retail space
- Located on the high-exposure corner of Park Lawn and Lake Shore Blvd.
- Strong demographics
- Region experiencing strong residential growth

AVAILABILITY

PAD - 5,700 SF - Available immediately

UNIT #1 - 1,806 SF - **UNDER CONTRACT**

PODIUM - 4,704 SF - Available immediately

UNIT #2 - 1,255 SF - **UNDER CONTRACT**

UNIT #3 - 1,719 SF - **UNDER CONTRACT**



TORONTO, ON GARRISON

GARRISON
AT FORT YORK

Address : 177 Fort York Blvd. Company : CBRE
Contact : Brock Meddick & Michi Jameson Phone : 416.815.2305

BUILDING FEATURES

- Retail units sit at the base of a 248-unit condo tower
- Close to King and Queen Street West restaurants and shops
- Streetcar accessible
- Located on the corner of Fort York Blvd and Bathurst St.
- Part of the master-planned Fort York neighbourhood

AVAILABILITY

UNIT #175 - 1,340 SF - **UNDER CONTRACT**



NORTH VANCOUVER, BC CENTREVIEW

Address : 1308 Lonsdale Avenue

Contact : John Middleton

Company : Onni Group

Phone : 604.602.7711

BUILDING FEATURES

- Whole Foods, Nando's, Liberty Wines, Steve Nash Fitness World, Shoppers Drug Mart, and Pearson's Home Hardware on site
- Large office and residential population surrounding the site
- More than 340 residential units within 2 attached towers
- Extensive underground parking

AVAILABILITY

Ground floor retail - 2,800 SF

2nd floor restaurant space - 5,514 SF

*Available immediately

NEW WESTMINSTER, BC THE ROYAL

Address : East 26 Royal Avenue

Contact : Wayne Tullis

Company : MacDonald Realty

Phone : 604.937.4804

BUILDING FEATURES

- Ground floor retail
- Located adjacent to The Point in Manhattan Beach
- Beneath 63 residential units and within a community of 1,200 residential units
- Kitchen venting available
- 200-400 AMP power

AVAILABILITY

UNIT #2 - 1,092 SF - Available immediately

UNIT #3 - 1,248 SF - Available immediately



COLWOOD, BC COLWOOD CORNERS

Address : Sooke Rd. & Belmont Rd.

Contact : John Middleton

Company : Onni Group

Phone : 604.602.7711

BUILDING FEATURES

- Join London Drugs & Coast Capital Savings in this exciting new project
- Located next to Royal Roads University
- Great exposure to Sooke Road

AVAILABILITY

Up to 125,000 SF available



BURNABY, BC

3355 NORTH ROAD

Address : 3355 North Road

Company : Onni Group

Contact : John Middleton

Phone : 604.602.7711

BUILDING FEATURES

- New construction
- Prime retail available on high-traffic routes
- Next to Lougheed Town Shopping Centre
- Transit-oriented, close proximity to Lougheed Town Centre SkyTrain Station
- Occupancy Spring 2022

AVAILABILITY

Approximately 14,862 SF of retail available



BURNABY, BC

GILMORE PLACE

Address : Lougheed Hwy & Gilmore Ave

Company : Onni Group

Contact : John Middleton

Phone : 604.602.7711

**GILMORE
PLACE**

BUILDING FEATURES

- Approximately 450,000 SF of retail space with up to 2.7 million SF of residential development and over one million SF of office space over 3 phases
- Large format, big box and CRU retail opportunities
- Transit - oriented, close proximity to Lougheed Town Centre SkyTrain Station
- Occupancy Spring 2022

AVAILABILITY

Up to 272,309 SF of retail over 3 levels in phase 1



VANCOUVER, BC

375 EAST 1ST AVENUE

Address : 375 East 1st Avenue

Company : Onni Group

Contact : John Middleton

Phone : 604.602.7711

BUILDING FEATURES

- 220 residential units
- 100,000 SF of hotel
- 129,000 SF of office
- Dense neighbourhood with substantial growth projections
- Adjacent to proposed SkyTrain Station

AVAILABILITY

Approximately 43,000 SF of retail

* Available Q1 2021



550 ROBSON STREET, SUITE 300
VANCOUVER, BC V6B 2B7

604.602.7711

LEASING@ONNI.COM

ONNI.COM