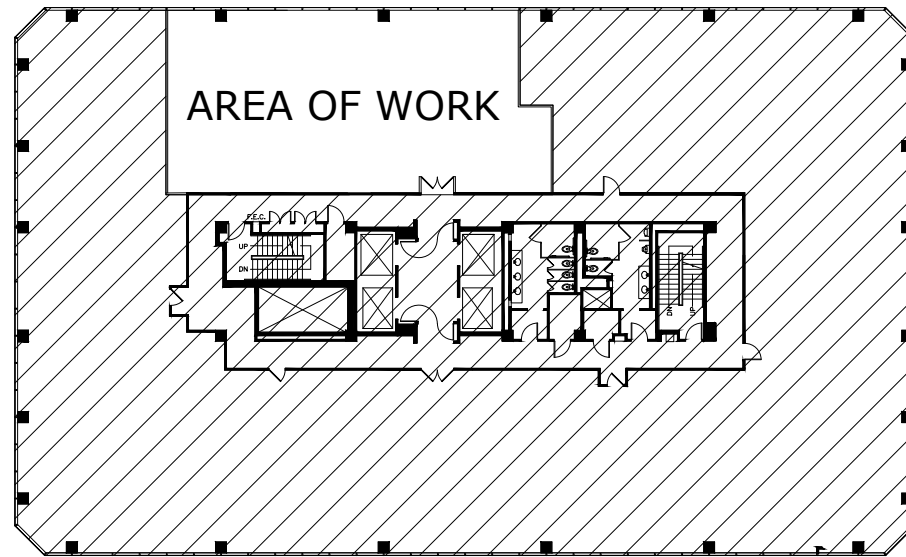


Onni Group
315 W. 9th St.,
Suite 801
Los Angeles, CA
90015
onni.com



700 N BRAND
4TH FLOOR
700 N BRAND BLVD.
GLENDALE, CA 91203

KEY PLAN:



ISSUE: 11/7/2017

REVISIONS:

NO.	DESCRIPTION	DATE

LEASING CONTACT INFORMATION:

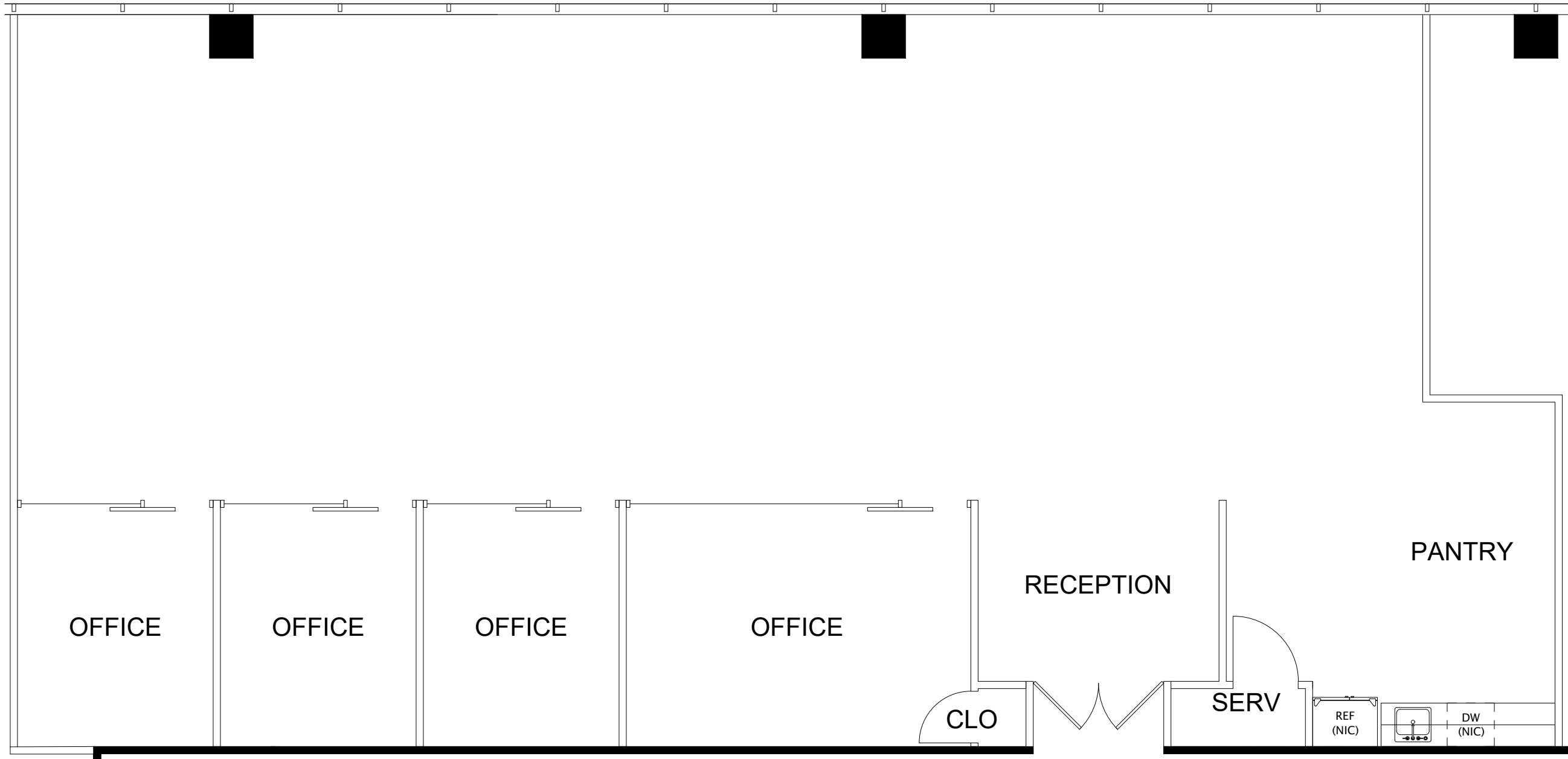
SHEET TITLE:

CONSTRUCTION
SET

SHEET:

COVER SHEET

700 N BRAND
 SUITE 420
 RSF: 2,836



ISSUE: 11/8/2017

SCALE: 3/16" = 1'

REVISIONS:

NO.	DESCRIPTION	DATE

LEGEND:

- DRYWALL
- GLAZING
- GLASS SLIDING DOOR
- GLASS SWING DOOR
- HOLLOW CORE DOOR

SHEET TITLE:

FLOOR PLAN

SHEET:

ID1.01

700 N BRAND
 SUITE 420
 RSF: 2,836

ISSUE: 11/8/2017

SCALE: 3/16" = 1'

REVISIONS:

NO.	DESCRIPTION	DATE

LEGEND:

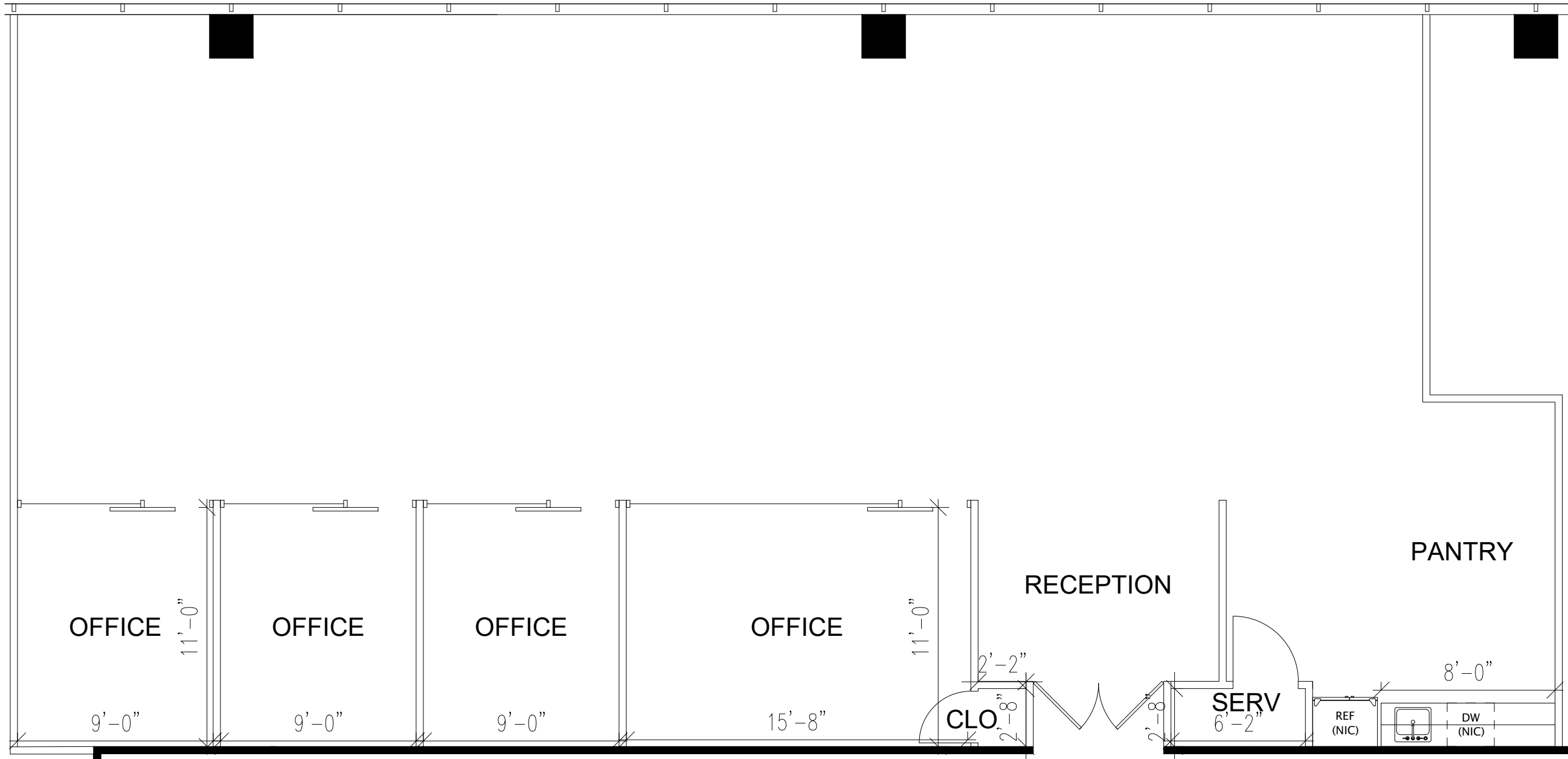
- DRYWALL
- GLAZING
- GLASS SLIDING DOOR
- GLASS SWING DOOR
- HOLLOW CORE DOOR

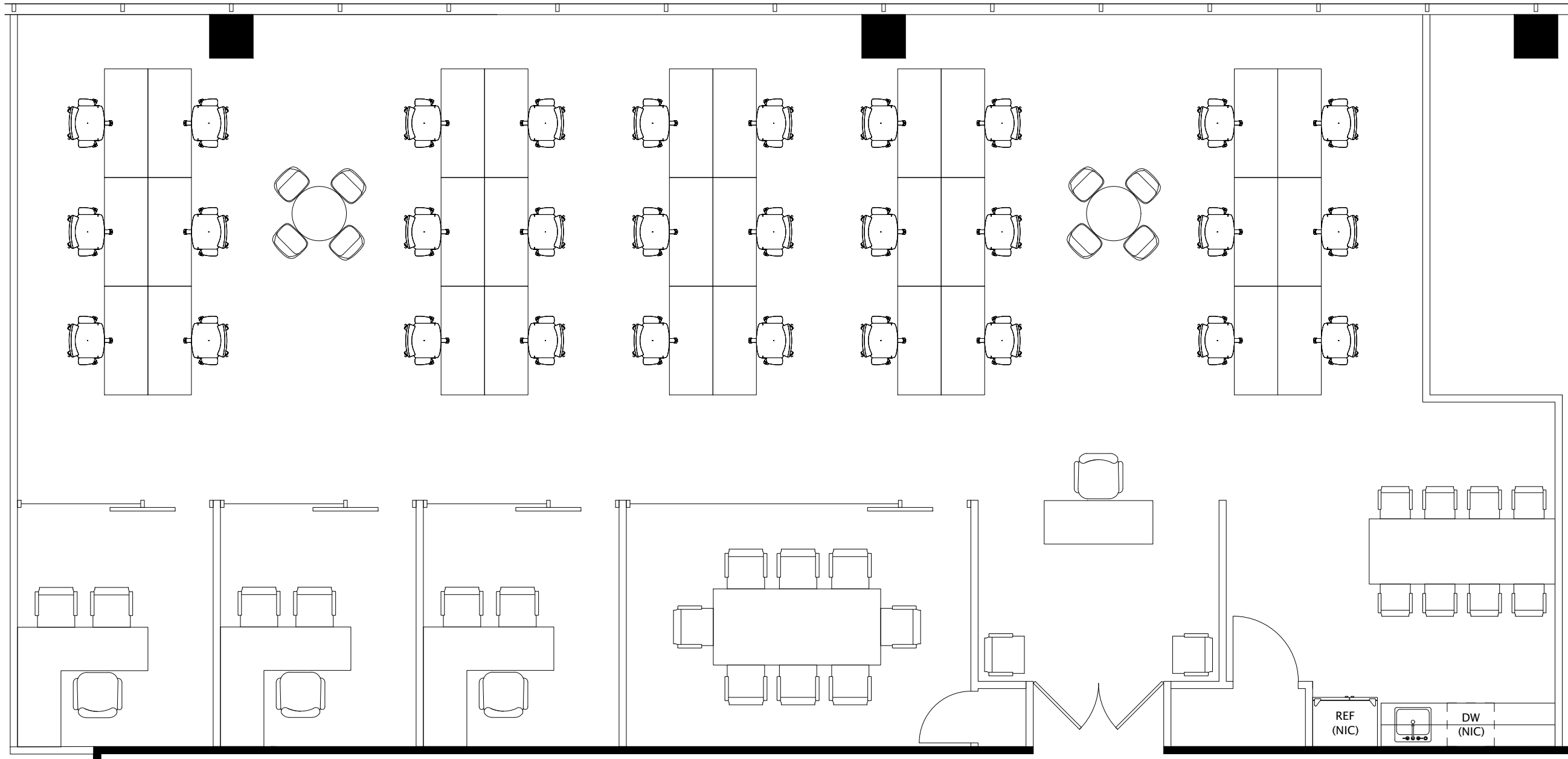
SHEET TITLE:

DIMENSIONED
 FLOOR PLAN

SHEET:

ID1.02





700 N BRAND
SUITE 420
RSF: 2,836

ISSUE: 11/8/2017

SCALE: 3/16" = 1'

REVISIONS:

NO.	DESCRIPTION	DATE

LEGEND:

- DRYWALL
- GLAZING
- GLASS SLIDING DOOR
- GLASS SWING DOOR
- HOLLOW CORE DOOR

SHEET TITLE:

FURNITURE PLAN

SHEET:

ID1.03