



# IMPRESSIONS

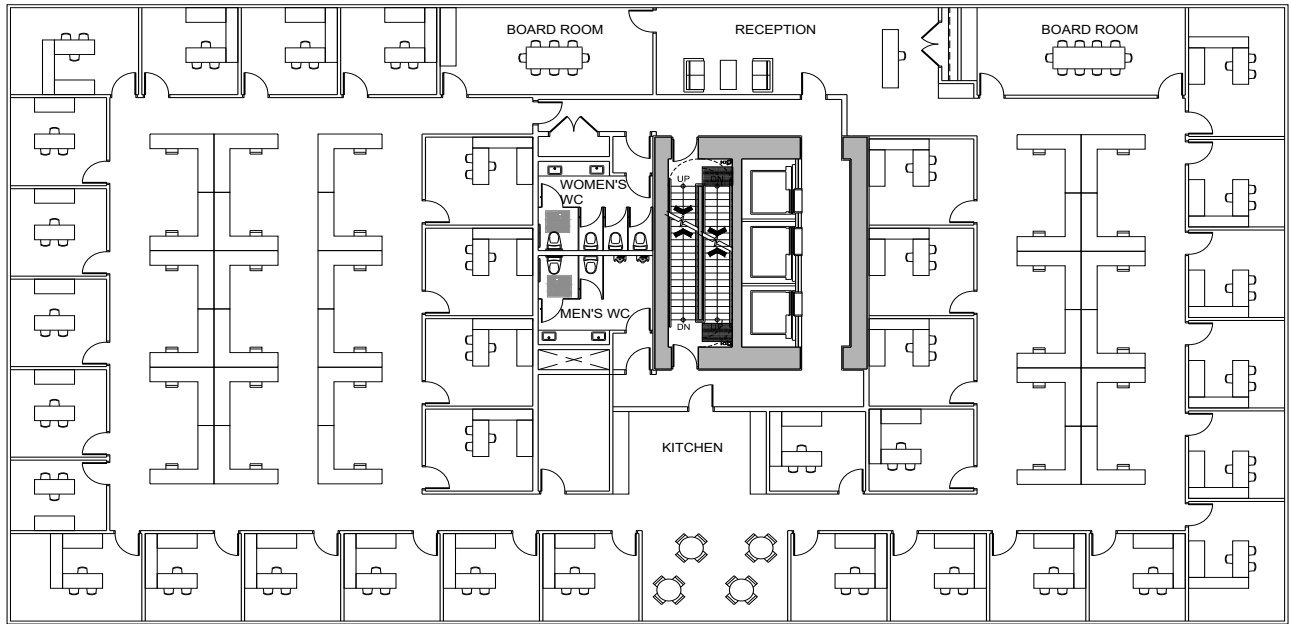
BY ONNI

**onni**<sup>®</sup>  
group

**OFFICE SPACE FOR LEASE**  
3355 NORTH ROAD, BURNABY, BC



## TYPICAL OFFICE FLOOR PLAN



## OPPORTUNITY

- Approximately 162,000 SF of office space
- 11 storey office building
- Average floor plate size 13,600 SF
- Approximate occupancy Q1 2022



## BUILDING FEATURES

- New construction
- Walking distance to Lougheed Town Centre station and the new Burquitlam station
- Conveniently serviced by the Millenium line, Expo line and Evergreen line
- 25 minutes to Downtown Vancouver
- 15 minutes to Coquitlam City Centre

