

1398 RICHARDS STREET  
VANCOUVER | BRITISH COLUMBIA

THE  
*Charleson*

AVAILABLE  
FALL 2021



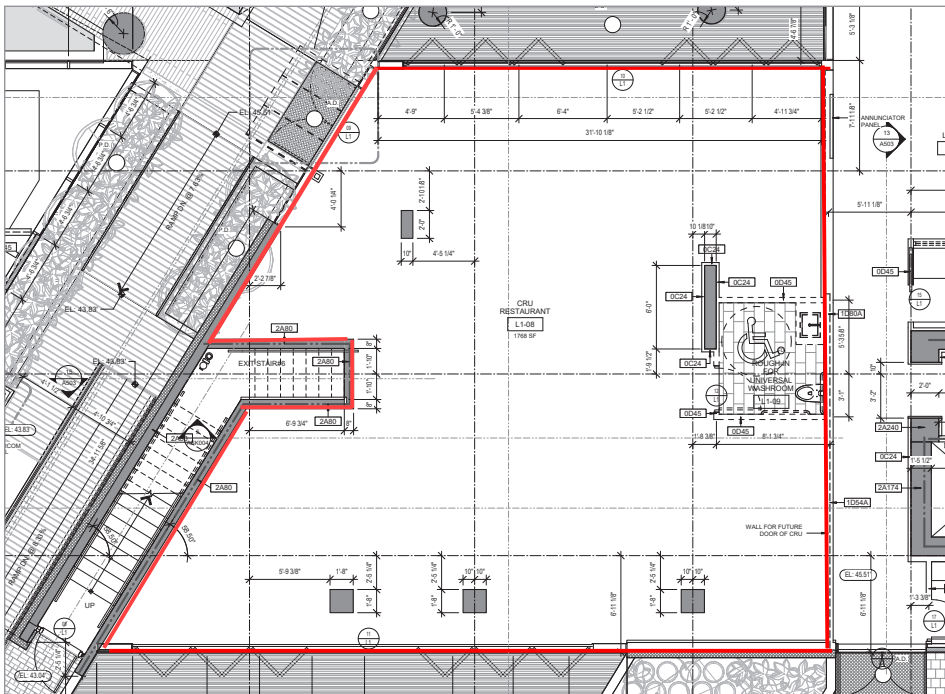
PRIME YALETOWN RETAIL LOCATION

ONNI.COM

Hilary Turnbull  
604.488.8988 | hturnbull@onni.com

onni<sup>®</sup>  
group



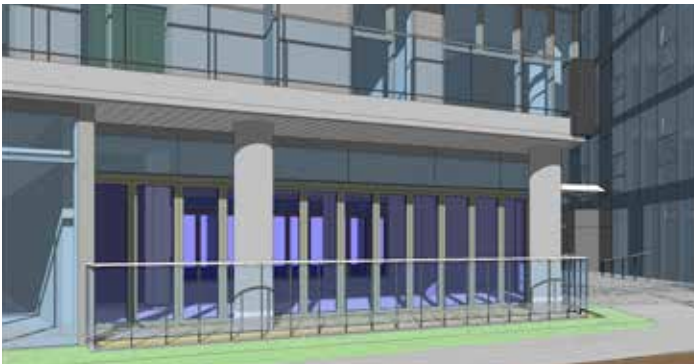


### THE DEVELOPMENT

This iconic, 43-storey tower is located on the corner of Richards Street and Pacific Street in Vancouver's stylish Yaletown neighbourhood. The Charleson is a modern designed mixed-used development featuring ground floor retail with residential units above.

### THE OPPORTUNITY

Available Retail Area: 1,768 sq. ft.  
Lease Rate: Inquire for Details



### LOCATION

