

CENTRAL
LONSDALE

ANCHORED BY
WHOLE FOODS



JOHN MIDDLETON
VICE PRESIDENT, LEASING
T 604.602.7711
E JMIDDLETON@ONNI.COM

ONNI GROUP
#300 - 550 ROBSON STREET
VANCOUVER, BC V6B 2B7
ONNI.COM



CENTREVIEW



OPPORTUNITY

CentreView is the highest profile mixed use redevelopment site on the North Shore of Metro Vancouver with approximately 91,200 square feet of new retail space.

CentreView is a community of its own with 342 residential homes in two towers, 78,800 square feet of office and an 11,000 square feet child care facility. Retail amenities include: Liberty Wines, Steve Nash Fitness World, Shoppers Drug Mart, personal services and Whole Foods as it's retail anchor.



AVAILABLE RETAIL UNITS

EAST 13TH STREET

- 2,800 sq. ft.

EAST 14TH STREET

- 894 sq. ft. LEASED

LONSDALE AVENUE

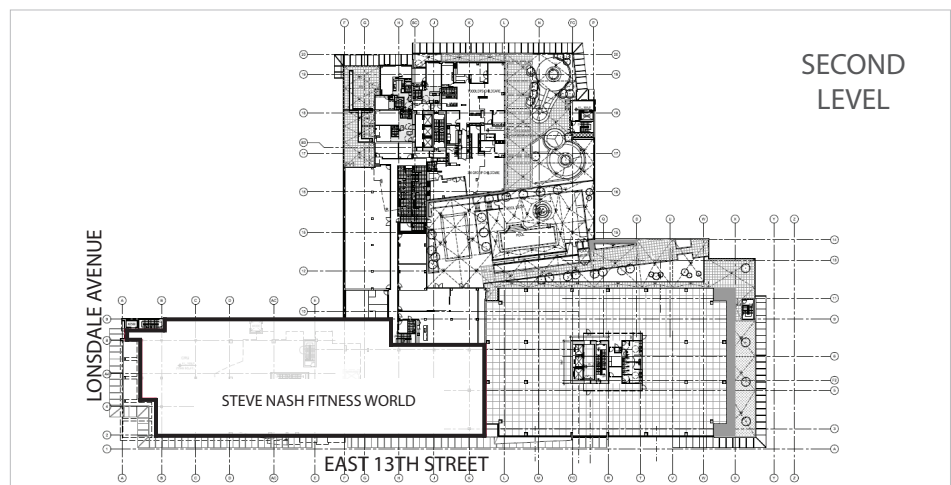
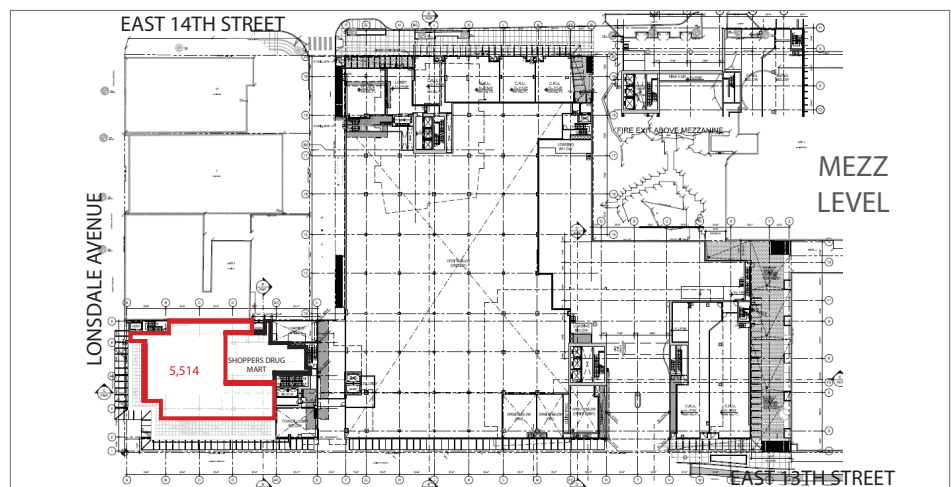
- 5,514 sq. ft.



LOCATION

On the corner of Lonsdale Avenue and East 13th Street, CentreView is situated within the heart of Central Lonsdale's office supply and the Lions Gate Hospital.

CentreView is also serviced by excellent transportation infrastructure, being located 1.8 km from the Seabus in Lonsdale Quay and 1.3 km south of Highway 1. Traffic counts in this area are 9,000 vehicles per day along 13th Street and 18,000 vehicles per day along Lonsdale Avenue.



NEW RETAIL FOR LEASE

In the neighbourhood

Food and drinks

- 1 Bravo Cucina
- 2 Browns Restaurant and Bar
- 3 Burgoo
- 4 Fishworks
- 5 Gusto Di Quattro
- 6 Hachi Hana Japanese
- 7 Jack Lonsdale's Pub and Liquor Store
- 8 Mother's Smoothies and Juice Bar
- 9 Palki
- 10 Paspas Taverna
- 11 Pier 7 Restaurant and Bar
- 12 Raglan's Bistro
- 13 Red Chili Szechuan
- 14 15 16 Starbucks
- 17 Sushi Bella
- 18 Sushi Nami Japanese
- 19 Symposio Greek Taverna
- 20 Tamarind Hill Malaysian Cuisine
- 21 The District
- 22 The Portly Chef
- 23 Tim Hortons
- 24 Mythos Taverna

Grocery

- 25 Artisan Bake Shoppe
- 26 Ayoub's Dried Fruits and Nuts
- 27 Blue Seas Fish Market
- 28 City Market Loblaws
- 29 Golestan Bakery
- 30 IGA
- 31 Kin's Farm Market
- 32 London Drugs
- 33 Lonsdale Quay
- 34 PriceSmart
- 35 36 Shoppers Drug Mart
- 37 Thrifty Foods

Medical

- 38 Lions Gate Hospital
- 39 Lonsdale Dental
- 40 Medical Clinic

Recreation

- 41 Chris Zuehlke Baseball Field
- 42 Derek Inman Tennis Courts
- 43 Harry Jerome Arena and Pool
- 44 Kinsmen Field
- 45 Lower Lonsdale Community Garden
- 46 Memorial Recreation Centre
- 47 Mickey McDougall Recreation Centre
- 48 Lawn Bowling Club and Tennis Courts
- 49 Tennis Courts and Soccer Field
- 50 Yogapod

Financial

- 51 Bank of Montreal
- 52 CIBC
- 53 HSBC
- 54 Royal Bank of Canada
- 55 Scotia Bank
- 56 TD Bank

Schools

- 57 Bodwell High School
- 58 Carson Graham Secondary
- 59 Lonsdale Creek Day Care Centre
- 60 Queen Mary Elementary
- 61 St Andrew's Preschool
- 62 St. Edmund's Elementary
- 63 St. Thomas Aquinas
- 64 Westview Elementary

Entertainment and Essentials

- 65 Capilano Mall
- 66 Centennial Theatre Centre
- 67 Empire Theatres
- 68 Lonsdale Pet Hospital
- 69 North Vancouver City Hall
- 70 North Vancouver RCMP
- 71 North Vancouver District Public Library
- 72 Seabus Terminal
- 73 The Pier
- 74 Vancouver Lonsdale Quay Bus Terminal



DRIVE TIMES

IMMEDIATE AREA: Lions Gate Hospital, North Vancouver City Hall, North Vancouver Public Library

10 MIN. DRIVE: Park Royal Shopping Centre, Park & Tilford Shops & Gardens, Seymour Creek Golf Centre, Capilano University, Lynn Valley Trails

15 MIN. DRIVE: Burnaby, West Vancouver, Vancouver



TRANSIT

CentreView's strategically located on North Vancouver's main transit corridors via both Lonsdale Avenue and 13th Street.

Being approximately a ten minute bus ride from Lonsdale Quay, CentreView's location connects North Vancouver to Metro Vancouver's public transit system.





CENTREVIEW

NEW RETAIL
FOR LEASE



JOHN MIDDLETON
VICE PRESIDENT, LEASING
T 604.602.7711
E JMIDDLETON@ONNI.COM

ONNI GROUP
#300 - 550 ROBSON STREET
VANCOUVER, BC V6B 2B7
ONNI.COM

