

GILMORE
PLACE

LOUGHEED HIGHWAY & GILMORE AVENUE

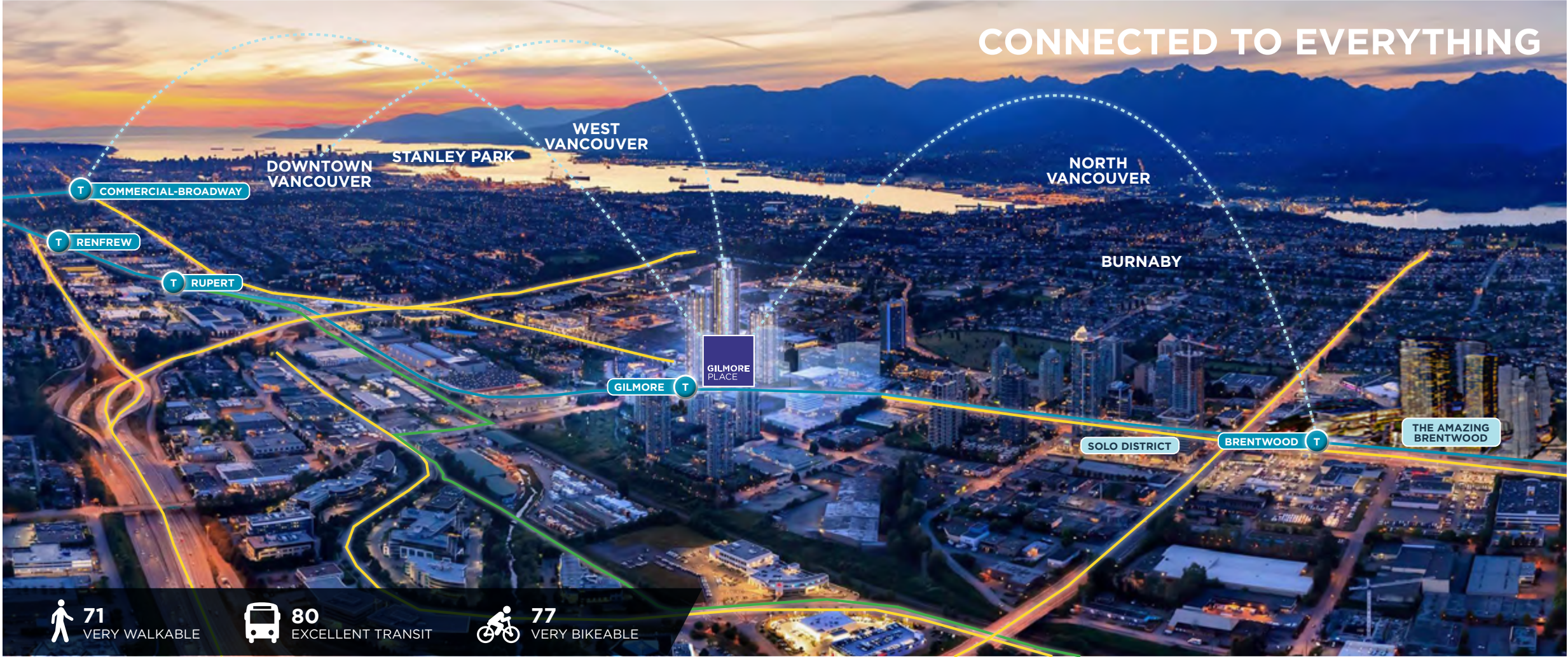


PERRY MAHAL
LEASING MANAGER

604.290.2548
PMAHAL@ONNI.COM

onni[®]
group

LOCATION



Directly adjacent to the Gilmore Millennium Station, Gilmore Place will draw commuters and shoppers alike from surrounding communities to its diverse assortment of large-format stores, boutique retailers, and multiple food and restaurant offerings. Quick access to Highway 1 plus communities in all directions, make Gilmore Place an exciting new shopping destination for all of Metro Vancouver.



RENDERING
GILMORE PLAZA



RENDERING
LOUGHEED PLAZA



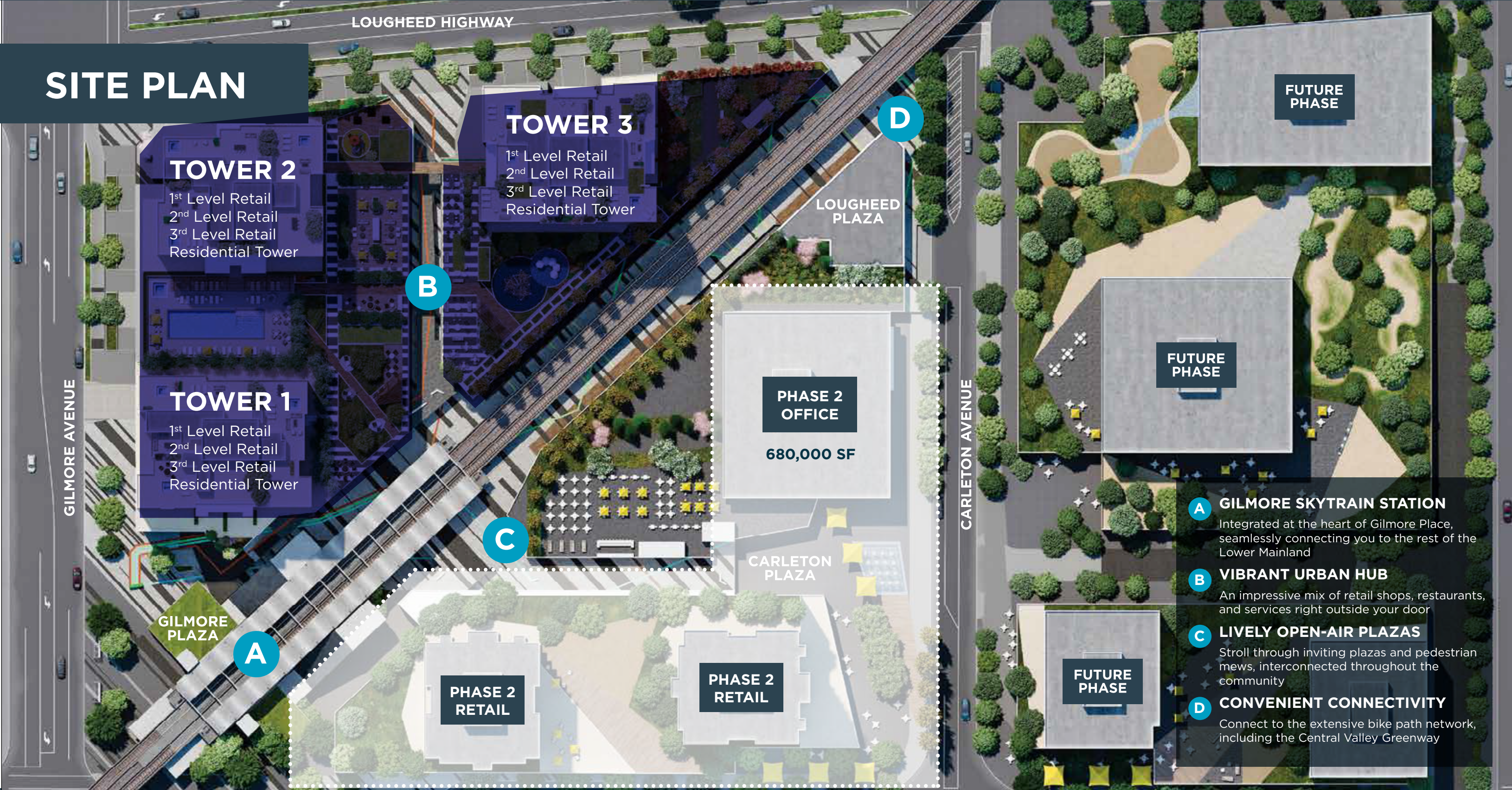
RENDERING
LEVEL 2 LOOKING EAST



RENDERING
LEVEL 2 LOOKING WEST



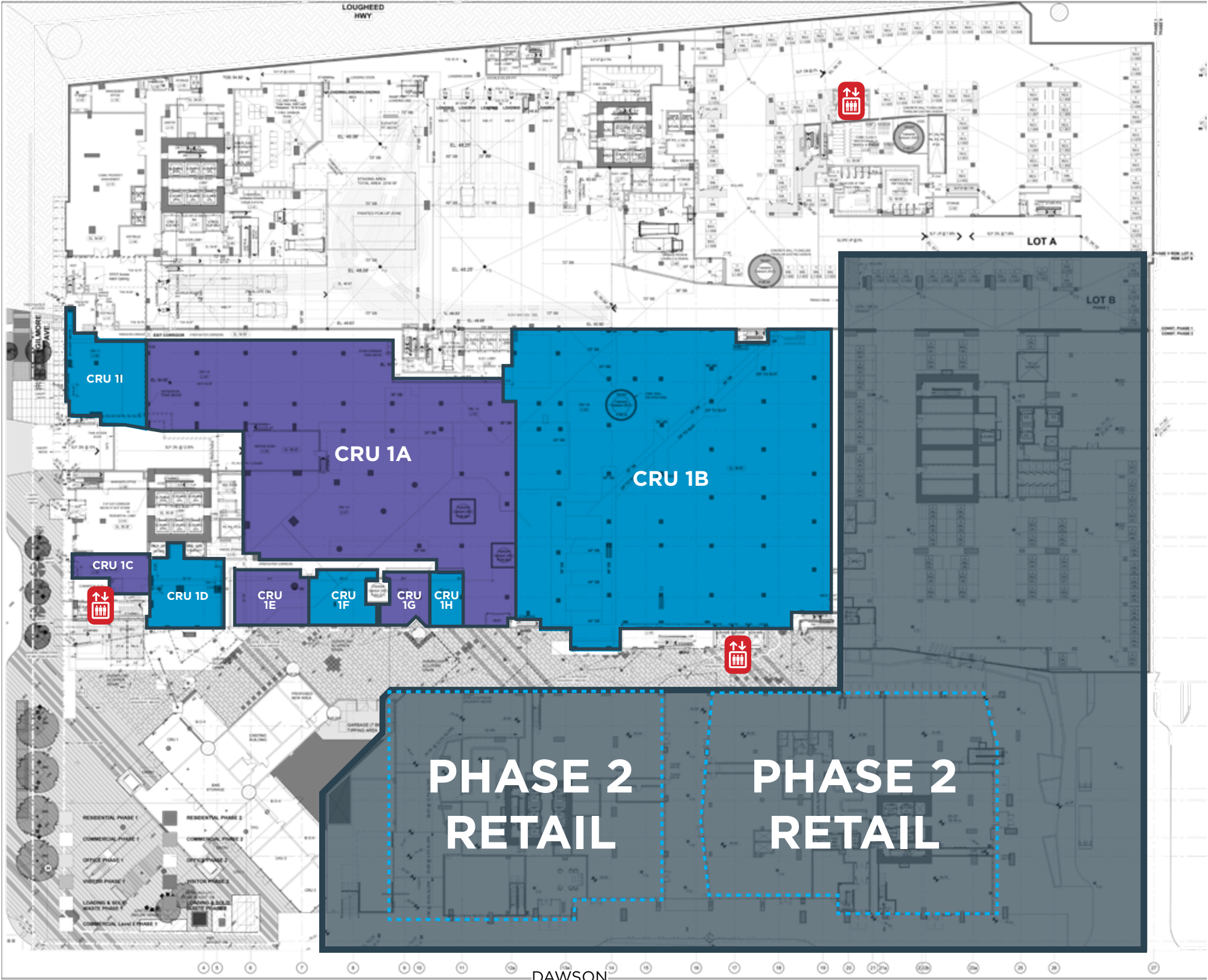
SITE PLAN



FLOOR PLAN
LEVEL 1

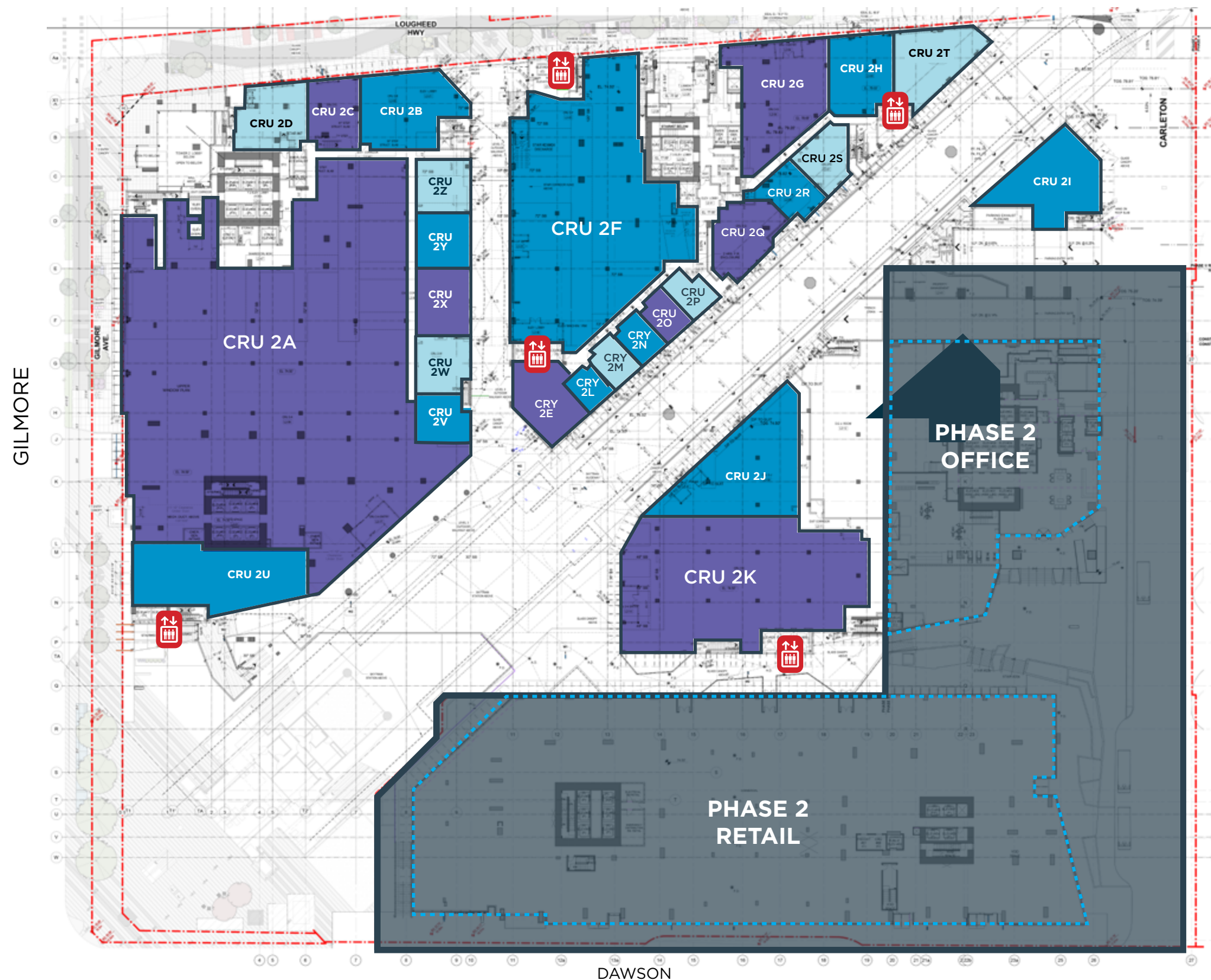
CRU	SQF
CRU 1A	21,068 SQF
CRU 1B	30,998 SQF
CRU 1C	787 SQF
CRU 1D	1,624 SQF
CRU 1E	1,512 SQF
CRU 1F	1,198 SQF
CRU 1G	828 SQF
CRU 1H	646 SQF

GILMORE



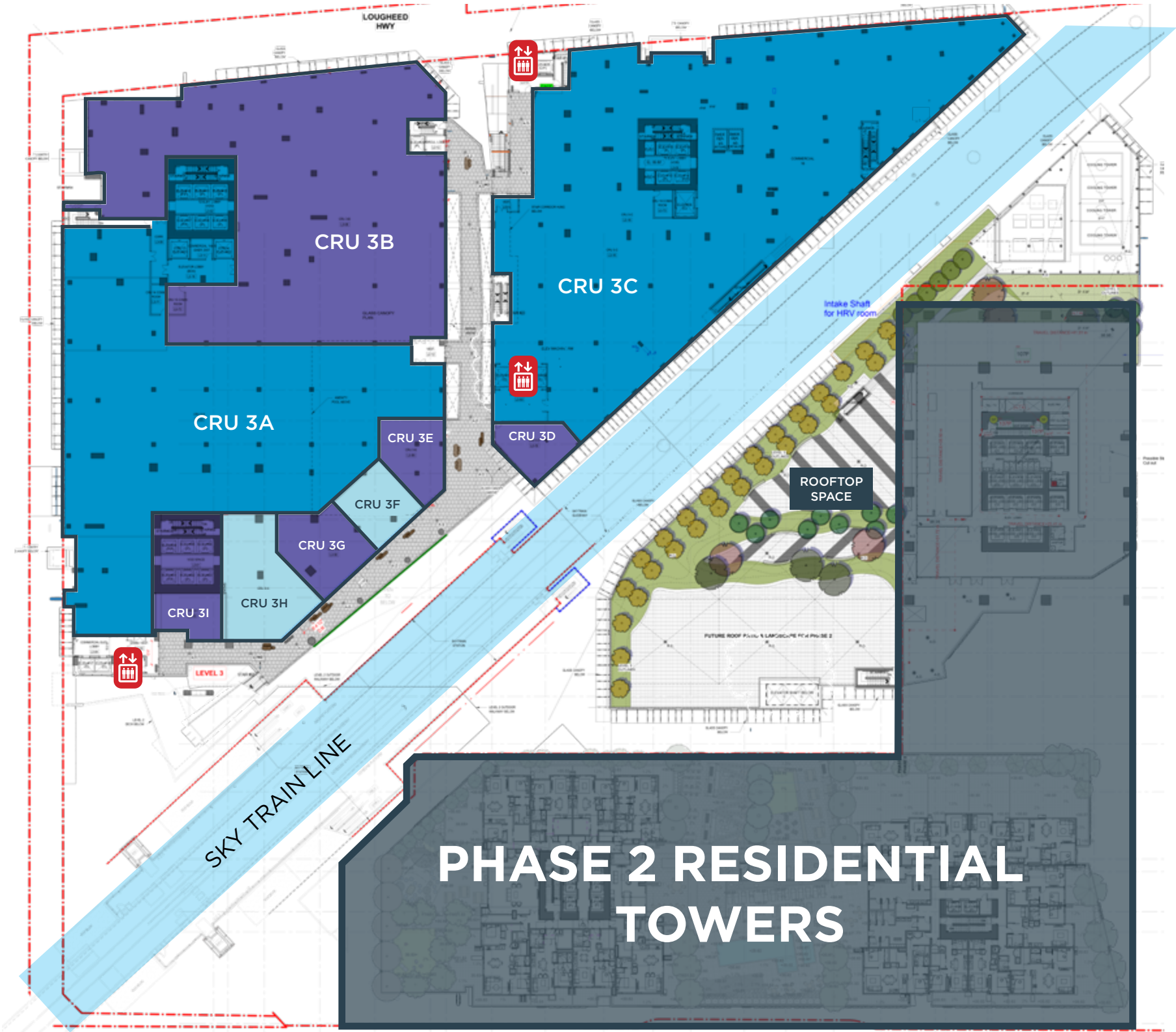
FLOOR PLAN LEVEL 2

CRU	SQF
CRU 2A	31,897 SQF
CRU 2B	2,395 SQF
CRU 2C	1,195 SQF
CRU 2D	1,598 SQF
CRU 2E	1,476 SQF
CRU 2F	12,104 SQF
CRU 2G	3,321 SQF
CRU 2H	1,705 SQF
CRU 2I	2,498 SQF
CRU 2J	3,85 SQF
CRU 2K	9,670 SQF
CRU 2L	476 SQF
CRU 2M	539 SQF
CRU 2N	539 SQF
CRU 2O	535 SQF
CRU 2P	502 SQF
CRU 2Q	1,474 SQF
CRU 2R	798 SQF
CRU 2S	955 SQF
CRU 2T	1,785 SQF
CRU 2U	2,963 SQF
CRU 2V	827 SQF
CRU 2W	1,017 SQF
CRU 2X	1,189 SQF
CRU 2Y	996 SQF
CRU 2Z	986 SQF

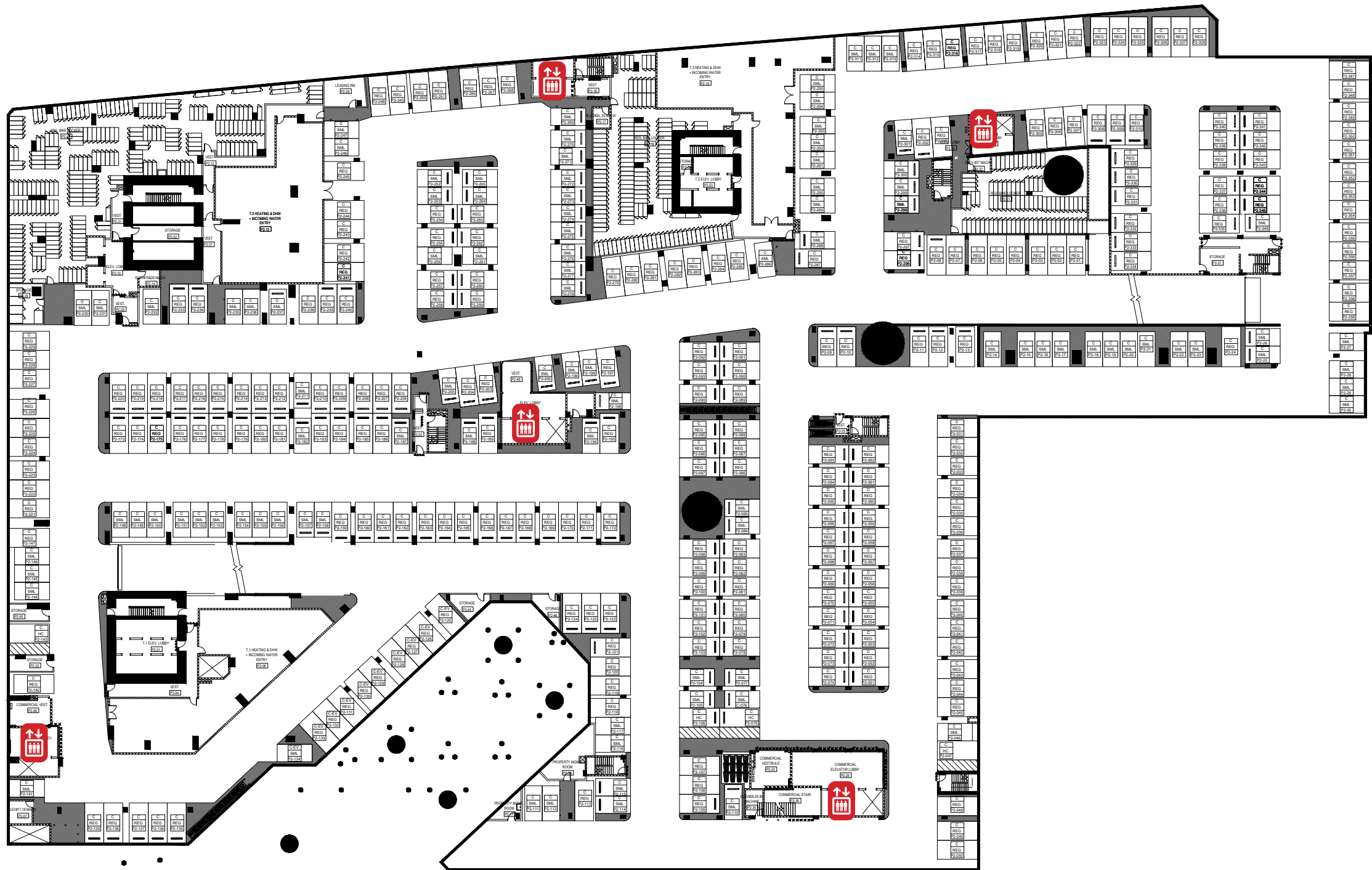


FLOOR PLAN
LEVEL 3

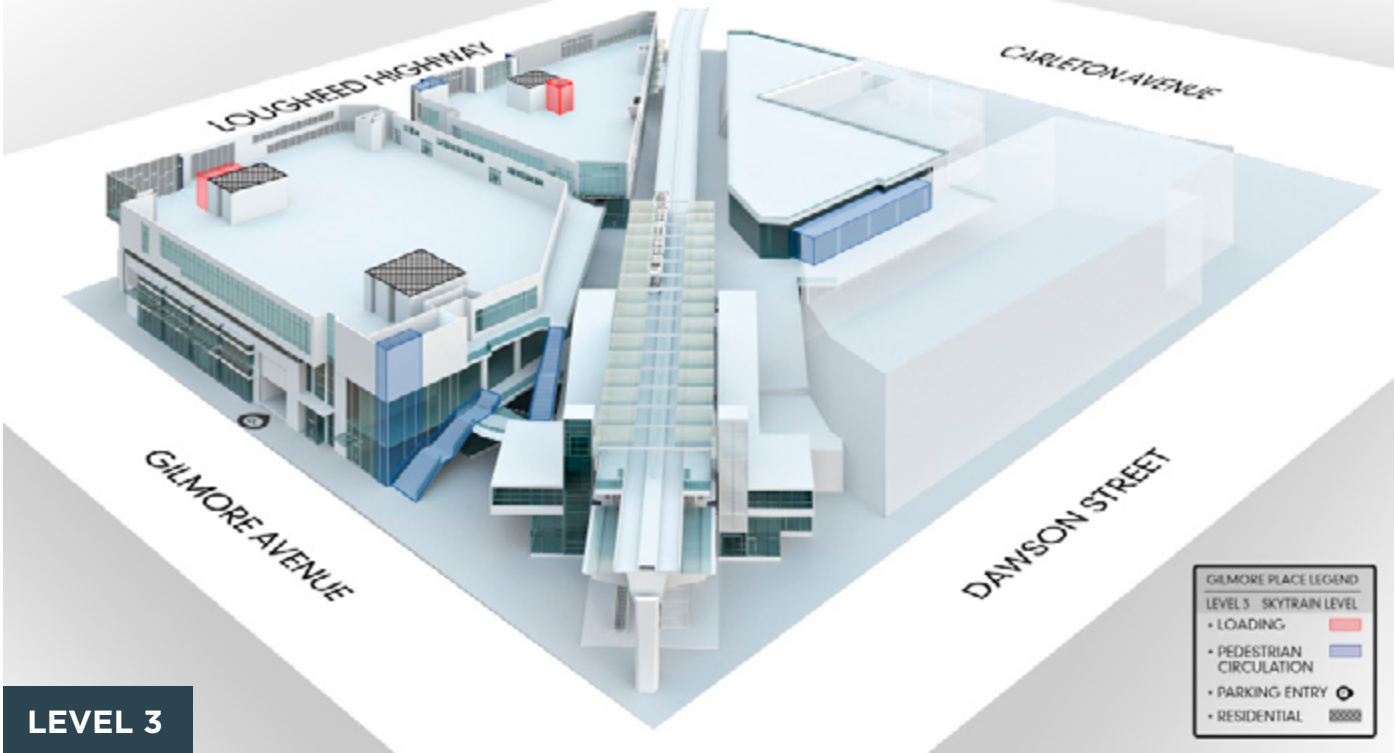
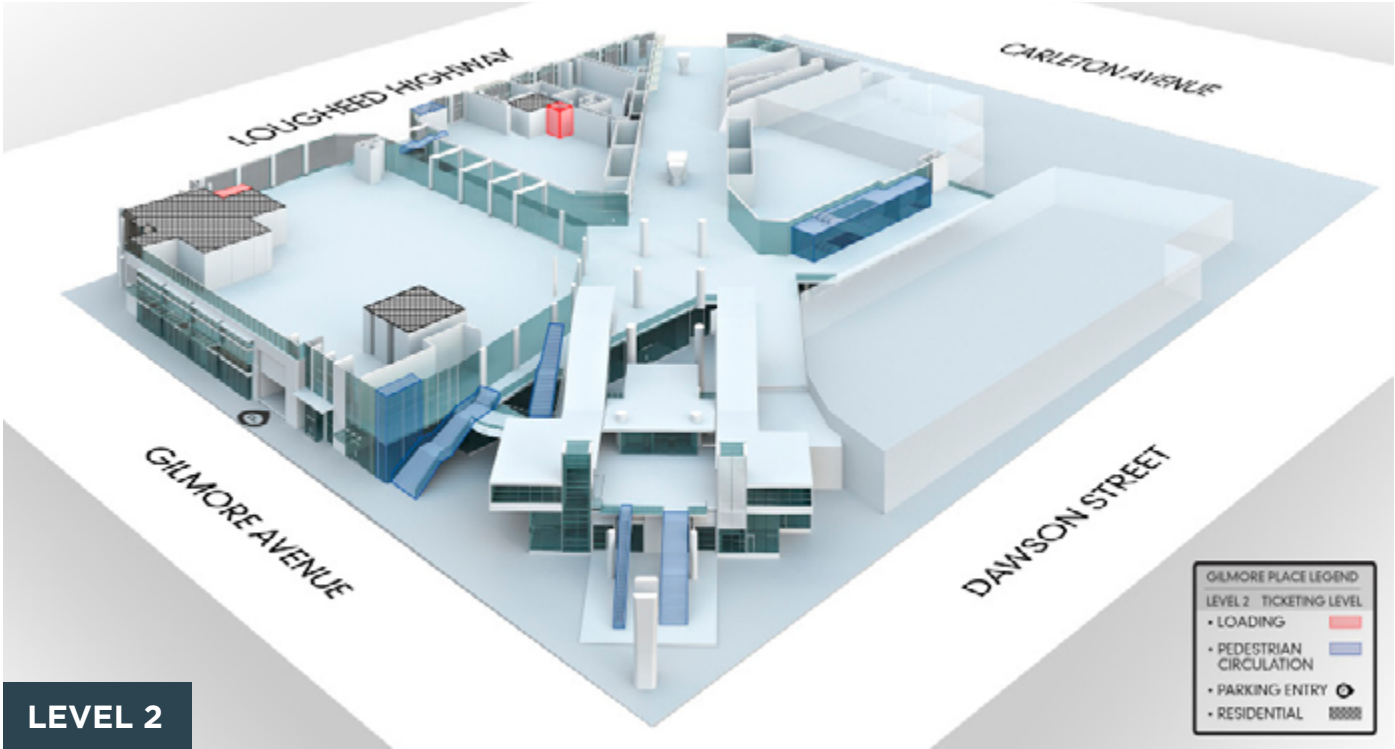
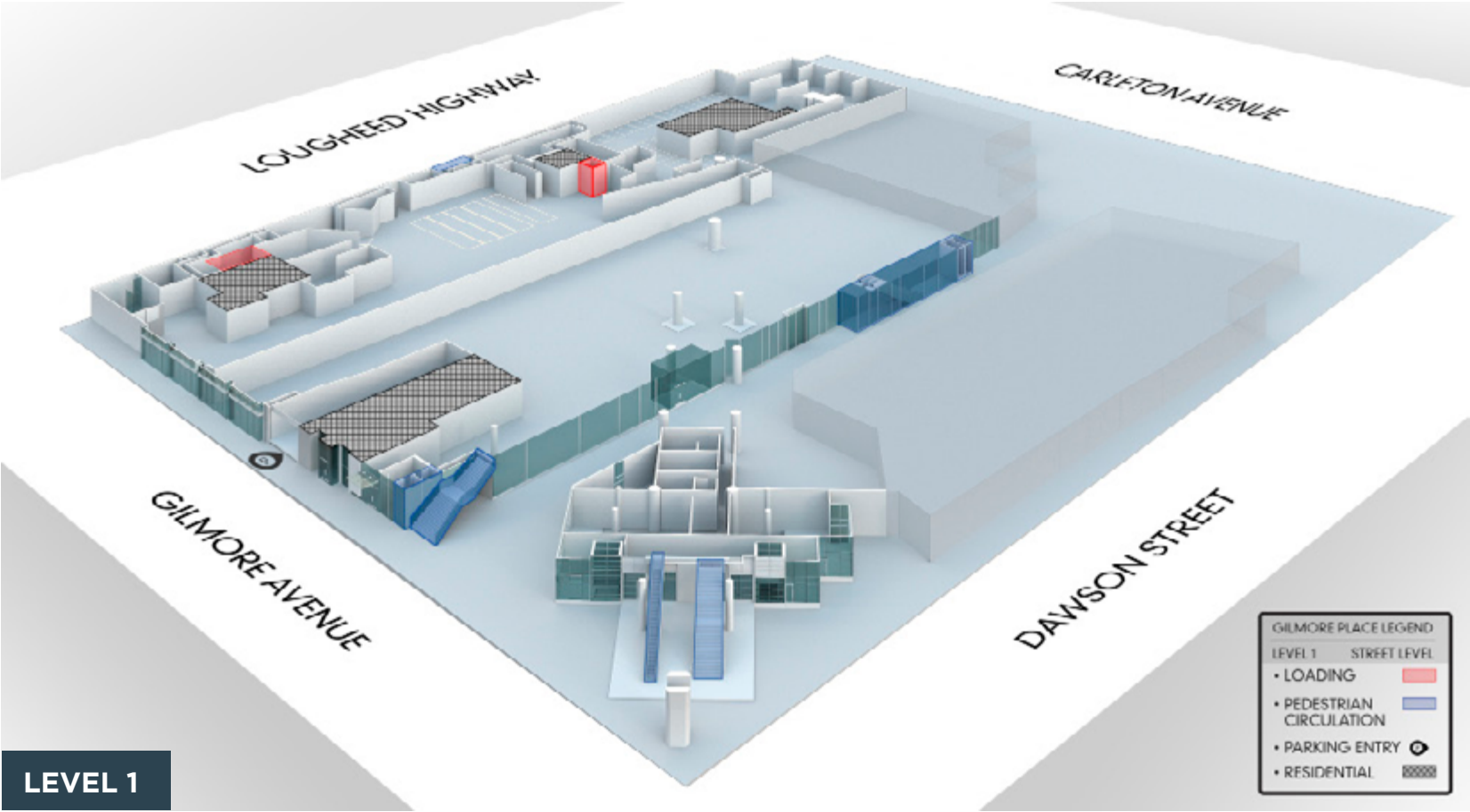
CRU	SQF
CRU 3A	21,434 SQF
CRU 3B	20,755 SQF
CRU 3C	29,656 SQF
CRU 3D	1,035 SQF
CRU 3E	1,343 SQF
CRU 3F	1,179 SQF
CRU 3G	1,627 SQF
CRU 3H	2,518 SQF
CRU 3I	892 SQF



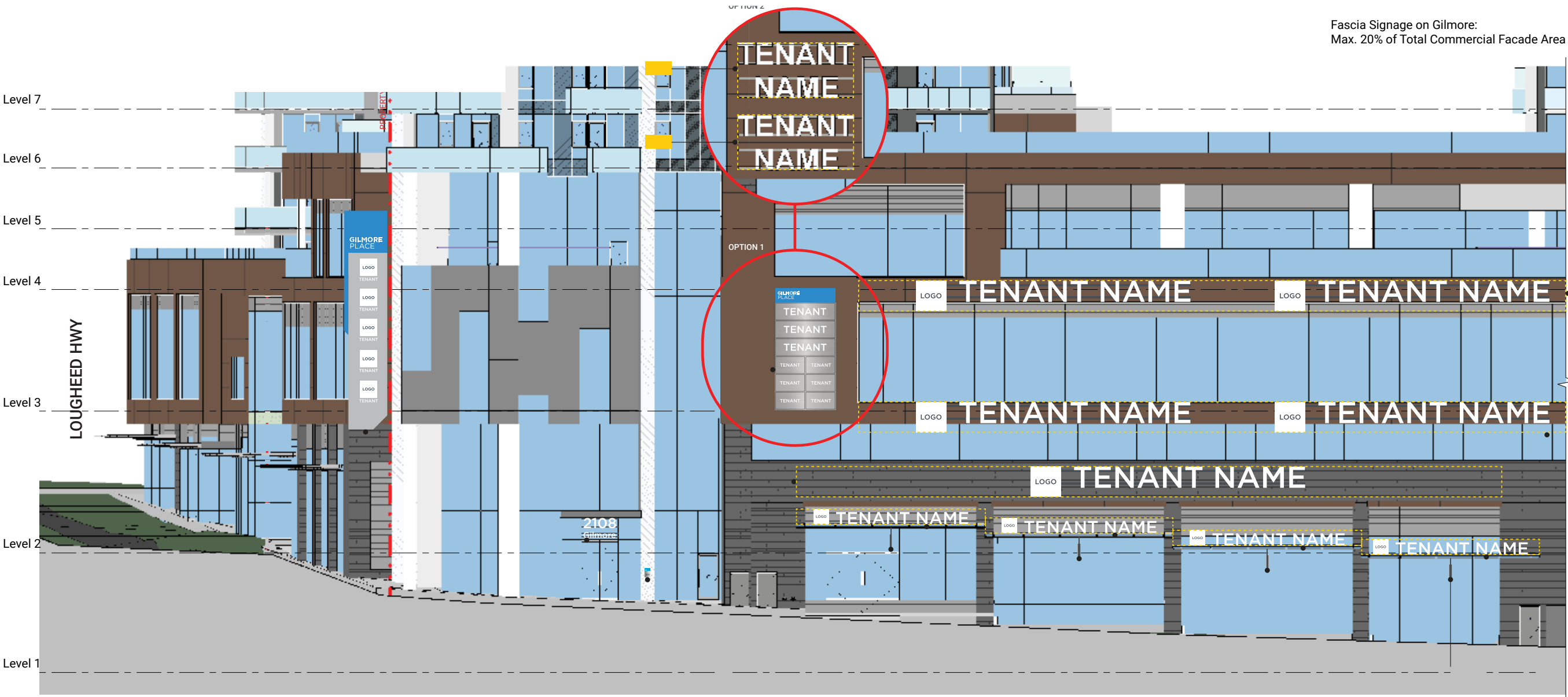
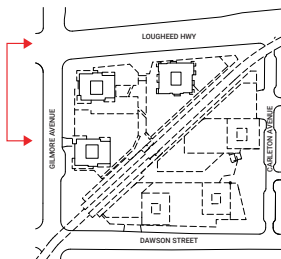
FLOOR PLAN PARKING



3D FLOORPLANS



WEST ELEVATION
GILMORE AVENUE

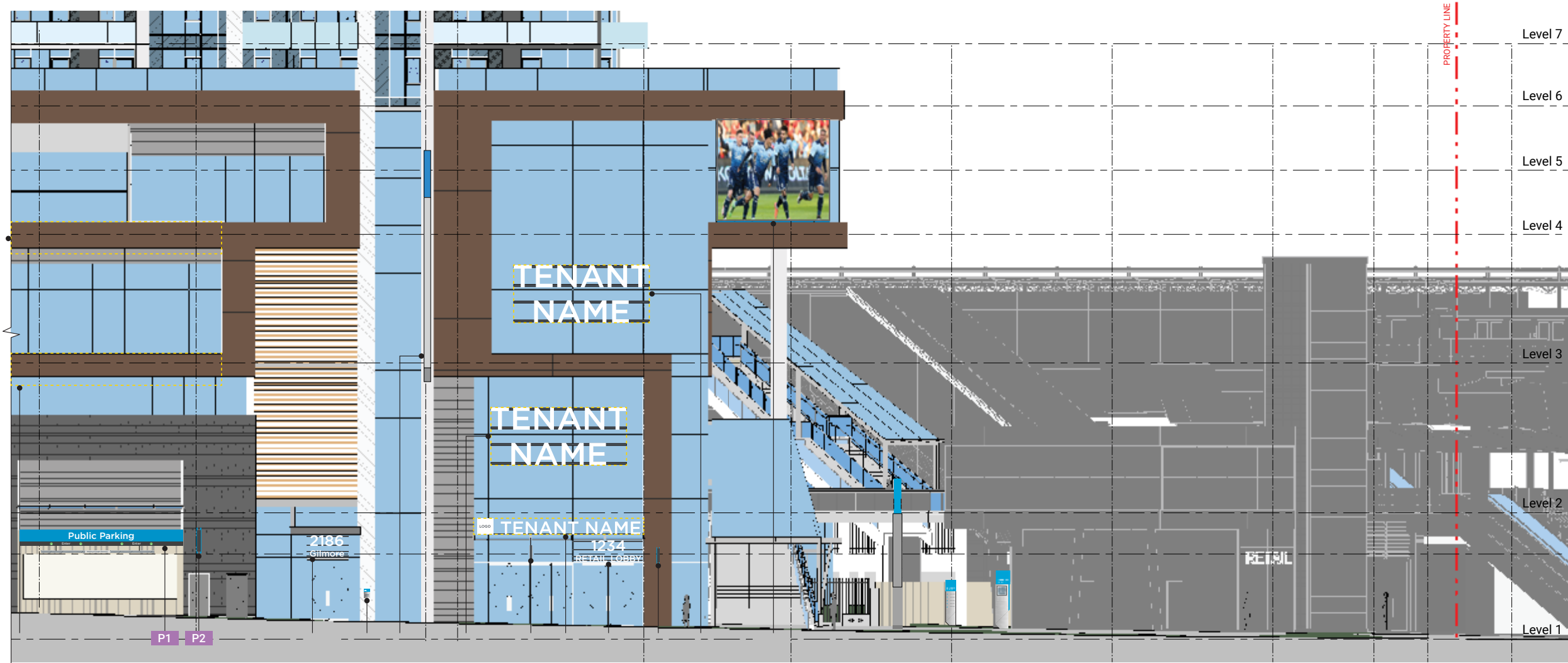
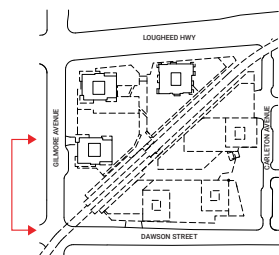


Fascia Signage on Gilmore:
Max. 20% of Total Commercial Facade Area

1 West Elevation - Gilmore Avenue
Scale 1/16" = 1'

WEST ELEVATION
GILMORE AVENUE

Fascia Signage on Gilmore:
Max. 20% of Total Commercial Facade Area



1 West Elevation - Gilmore Avenue
Scale 1/16" = 1'

NORTH ELEVATION
LOUGHEED HIGHWAY

