

# EVELYN

by ONNI

## TOWNHOMES AT EVELYN WALK

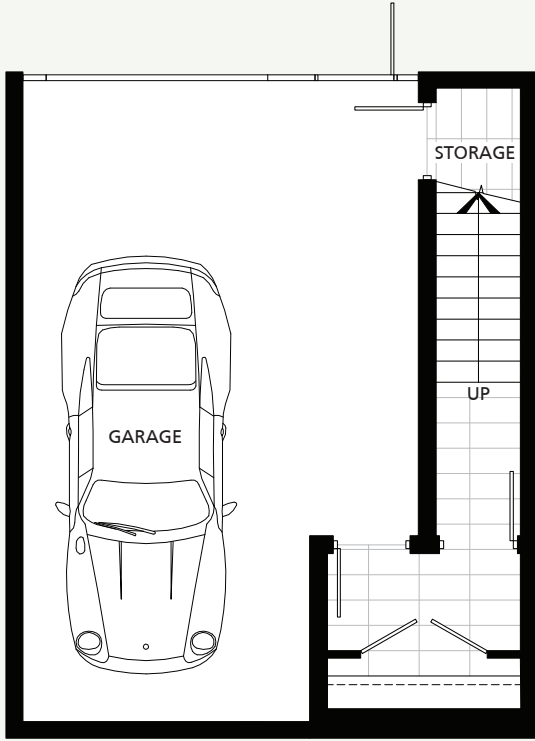
### PLAN THA | 3 Bedroom + Family Room

**TOTAL AREA 2,340-2,380 SF**

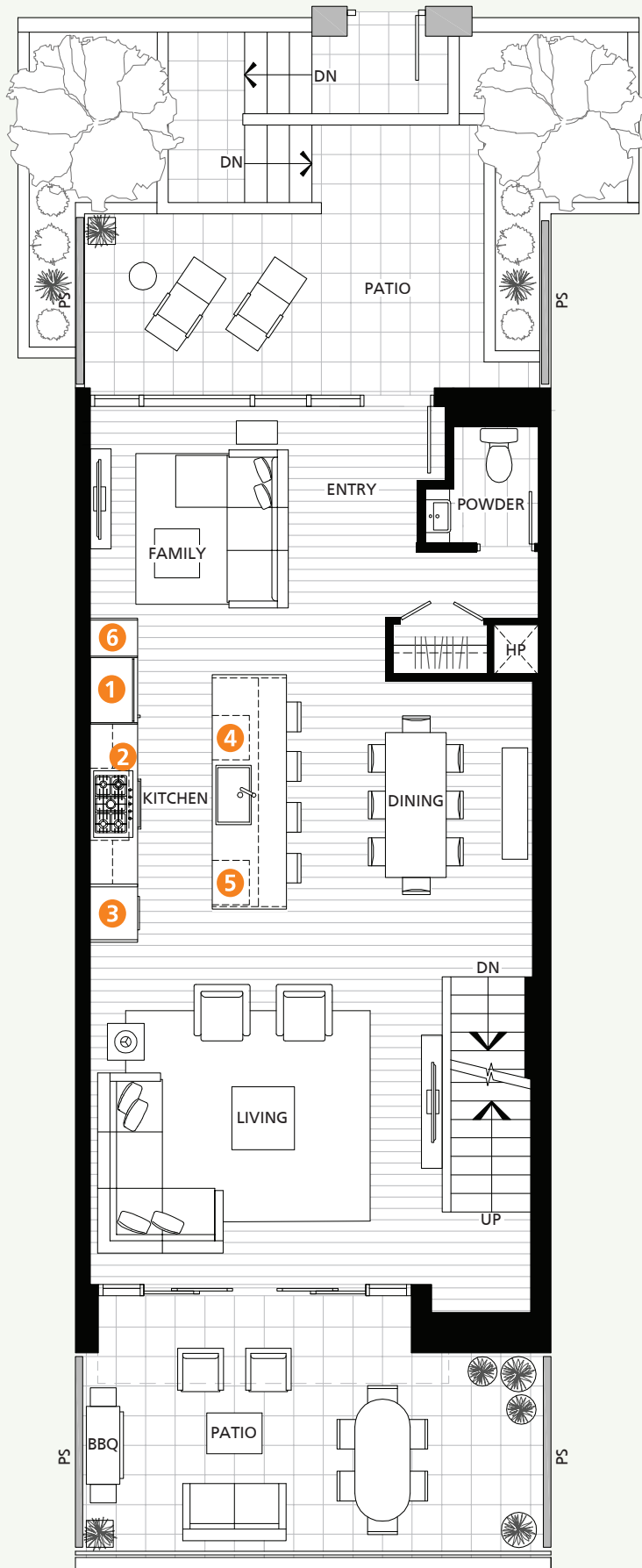
**1,895-1935 SF**  
INDOOR AREA

**445 SF**  
OUTDOOR AREA

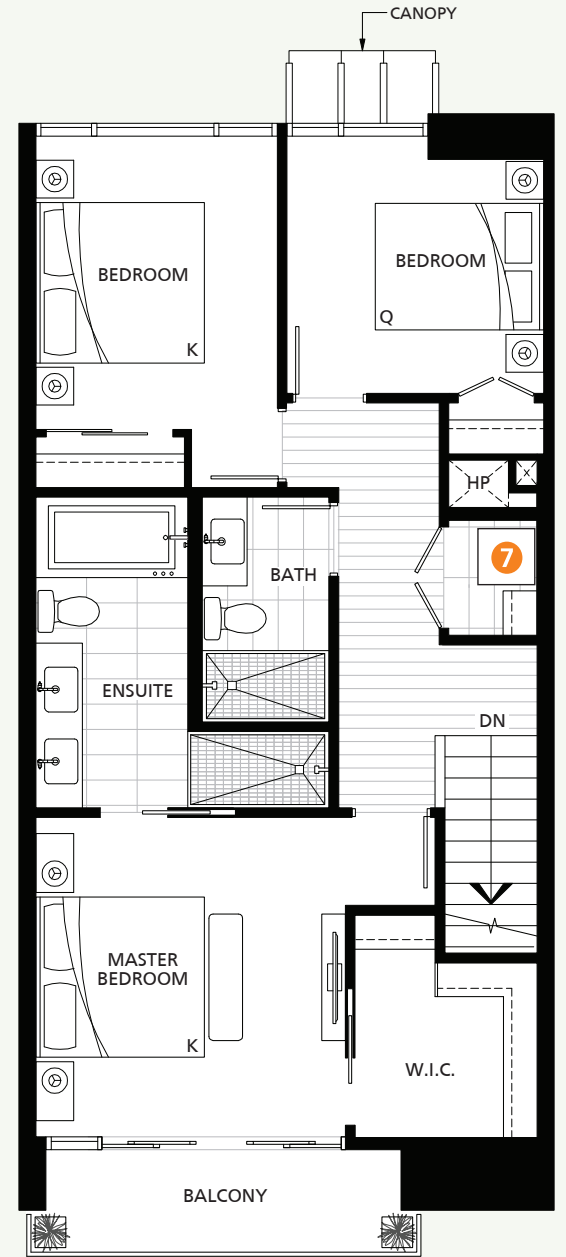
- 1 36" Sub Zero Integrated Refrigerator
- 2 36" Wolf Gas Cooktop + Faber Integrated Hood Fan
- 3 30" Wolf Convection Wall Oven + Panasonic Microwave
- 4 Cove Integrated Dishwasher
- 5 24" Sub Zero Integrated Under-Counter Wine Fridge
- 6 Pantry
- 7 High-Efficiency Full Size Washer and Dryer



**GARAGE**



**MAIN FLOOR**



**2<sup>ND</sup> FLOOR**

