



Plan PHC 2 Bedroom

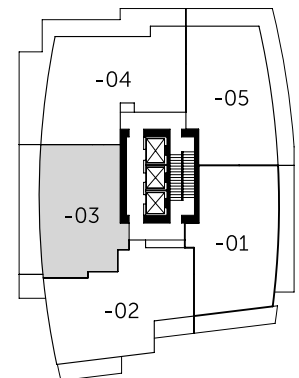
Tower B

Living: 1,110 SQ.FT. (approx.)
 Outdoor: 280-285 SQ.FT. (approx.)
 Units: 2203, 2303



List of Appliances:

- ① 36" Integrated Fhiaba Refrigerator
- ② 36" Fulgor Milano Gas Cooktop
- ③ 36" Faber Cristal Slim Line Hoodfan
- ④ 30" Fulgor Milano Convection Oven
- ⑤ Integrated Blomberg Dishwasher
- ⑥ Panasonic Microwave with Trim Kit



Dimensions, square footage, floor plates and floor plans are approximate only. The developer reserves the right without notice to make modifications to dimensions, square footage, floor plans, floor plates, landscaping design, project design, materials and specifications to maintain the high standard of this development. The Developer may also make such further modifications as are permitted by the disclosure statement and the contract of purchase and sale between the purchaser and developer. E.&O.E.





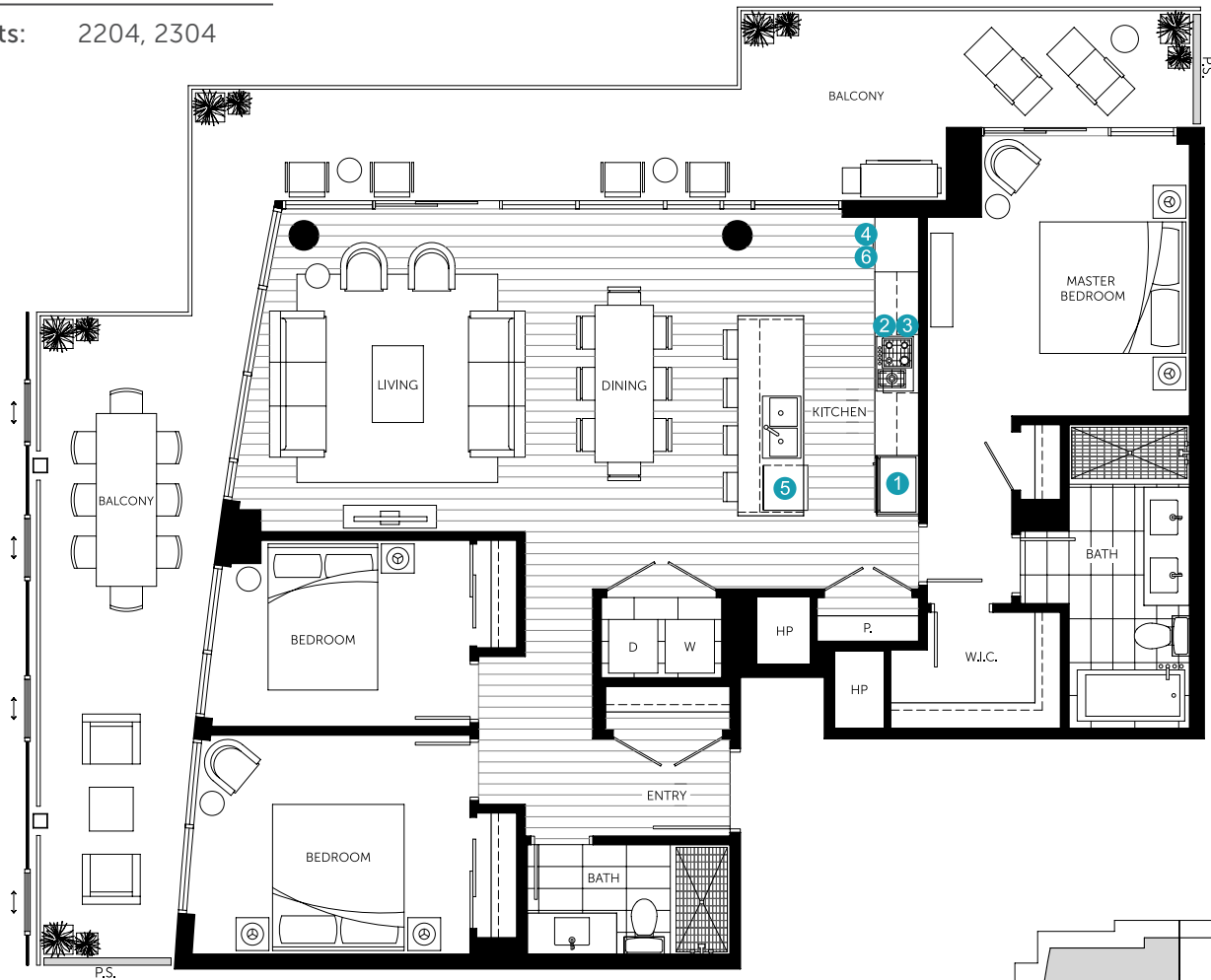
Plan PHD 3 Bedroom

Tower B

Living: 1,360 SQ.FT. (approx.)

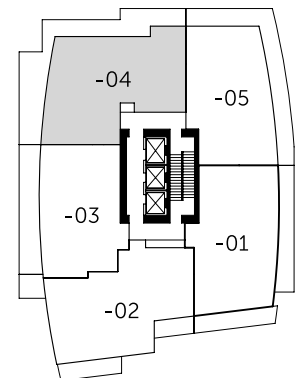
Outdoor: 560 SQ.FT. (approx.)

Units: 2204, 2304



List of Appliances:

- ① 36" Integrated Fhiaba Refrigerator
- ② 36" Fulgor Milano Gas Cooktop
- ③ 36" Faber Cristal Slim Line Hoodfan
- ④ 30" Fulgor Milano Convection Oven
- ⑤ Integrated Blomberg Dishwasher
- ⑥ Panasonic Microwave with Trim Kit



Dimensions, square footage, floor plates and floor plans are approximate only. The developer reserves the right without notice to make modifications to dimensions, square footage, floor plans, floor plates, landscaping design, project design, materials and specifications to maintain the high standard of this development. The Developer may also make such further modifications as are permitted by the disclosure statement and the contract of purchase and sale between the purchaser and developer. E.&O.E.

