

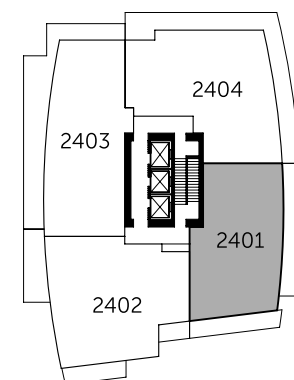
## Plan PH1 2 Bedroom

Living: 1,490 SQ.FT. (approx.)  
Outdoor: 1,420 SQ.FT. (approx.)

Units: 2401

### List of Appliances

- ① 36" Integrated Fhiaba Refrigerator
- ② 36" Fulgor Milano Gas Cooktop
- ③ 36" Faber Cristal Slim Line Hoodfan
- ④ 30" Fulgor Milano Convection Oven
- ⑤ Integrated Blomberg Dishwasher
- ⑥ Panasonic Microwave with Trim Kit
- ⑦ Built-in Jenn-Air Coffee Maker

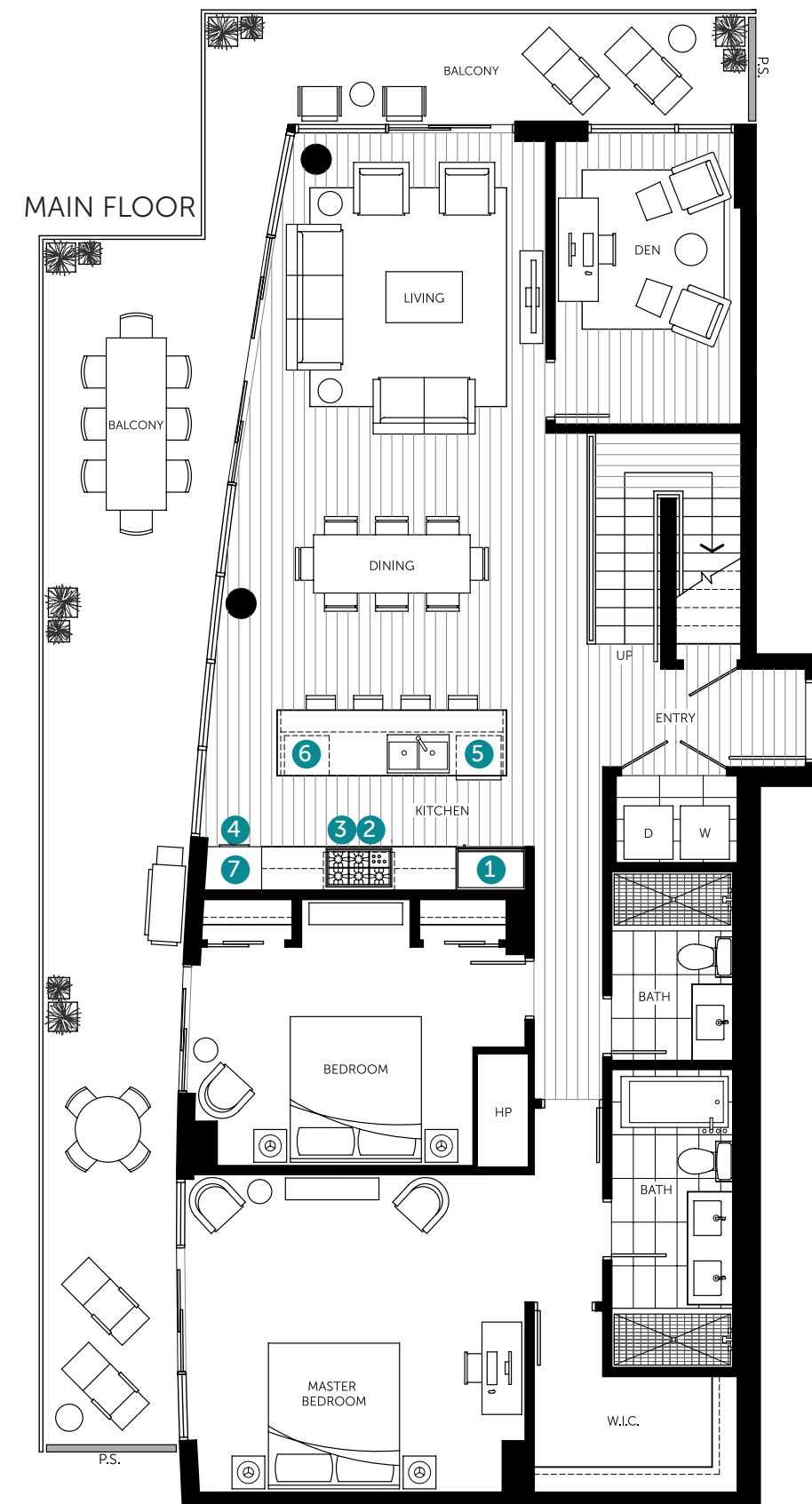
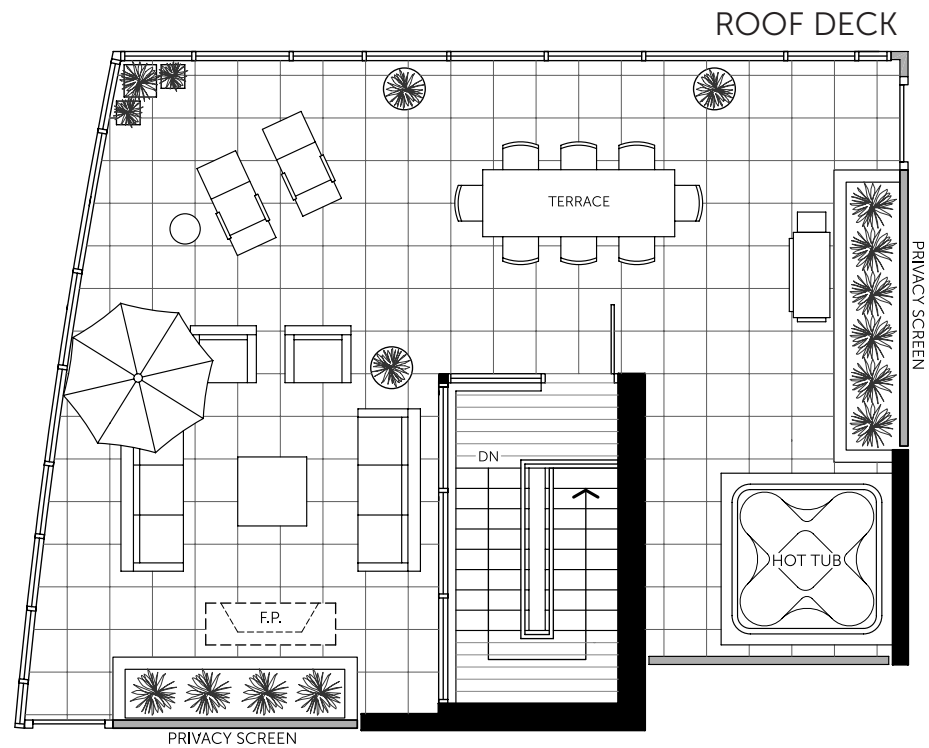


24th Floor



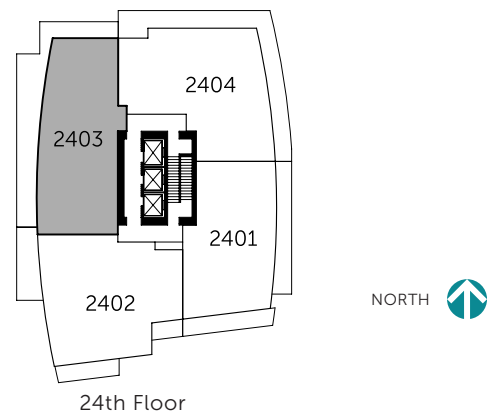
**CENTREVIEW**

Hot tub and outdoor fireplace are upgrade option only. Dimensions, square footage, floor plates and floor plans are approximate only. The developer reserves the right without notice to make modifications to dimensions, square footage, floorplans, floor plates, landscaping design, project design, materials and specifications to maintain the high standard of this development. The Developer may also make such further modifications as are permitted by the disclosure statement and the contract of purchase and sale between the purchaser and developer. E.&O.E.



List of Appliances

- ① 36" Integrated Fhiaba Refrigerator
- ② 36" Fulgor Milano Gas Cooktop
- ③ 36" Faber Cristal Slim Line Hoodfan
- ④ 30" Fulgor Milano Convection Oven
- ⑤ Integrated Blomberg Dishwasher
- ⑥ Panasonic Microwave with Trim Kit
- ⑦ Built-in Jenn-Air Coffee Maker



**CENTREVIEW**

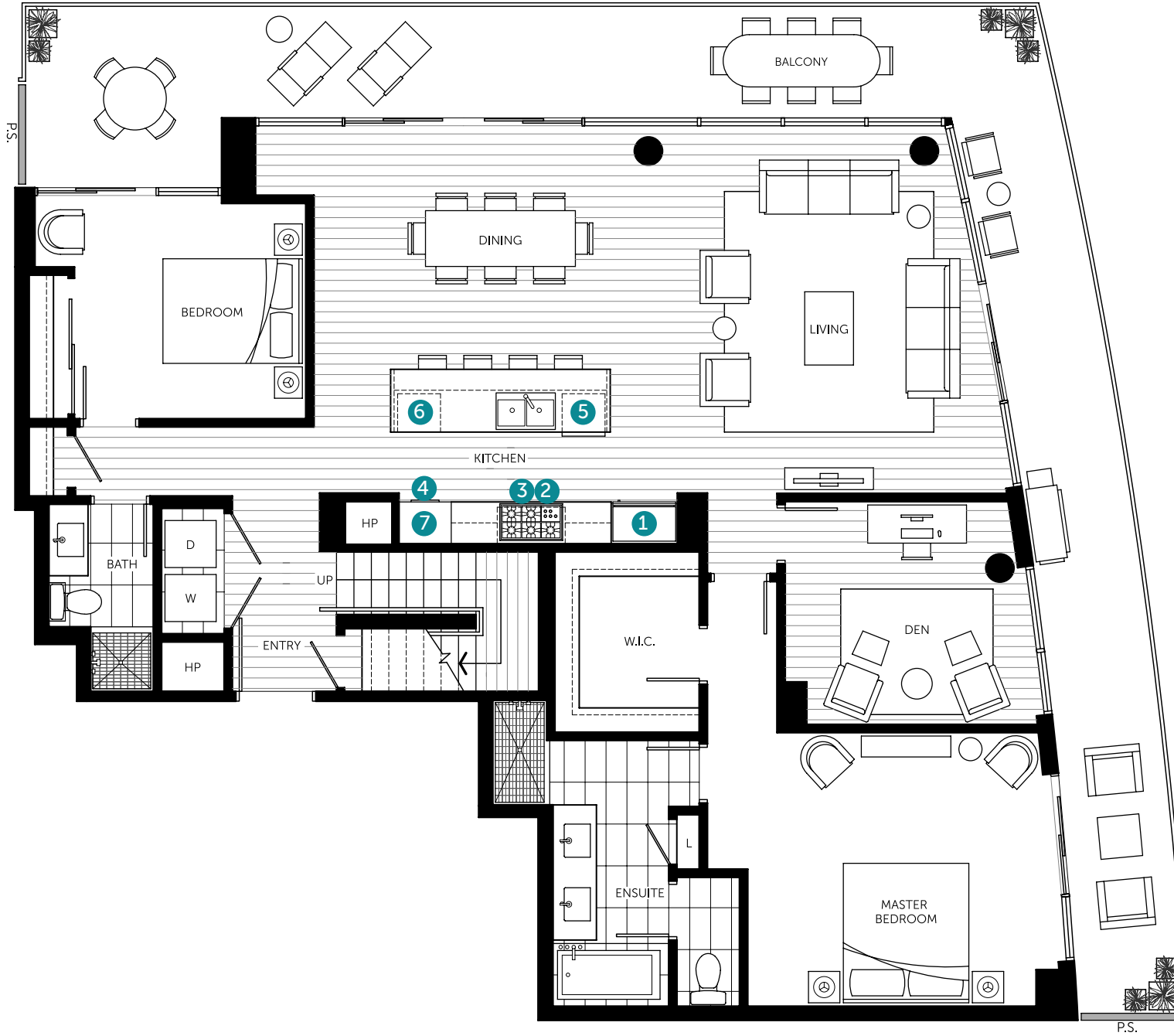
Plan PH3  
2 Bedroom + Den

Living: 1,700 SQ.FT. (approx.)  
Outdoor: 1,300 SQ.FT. (approx.)

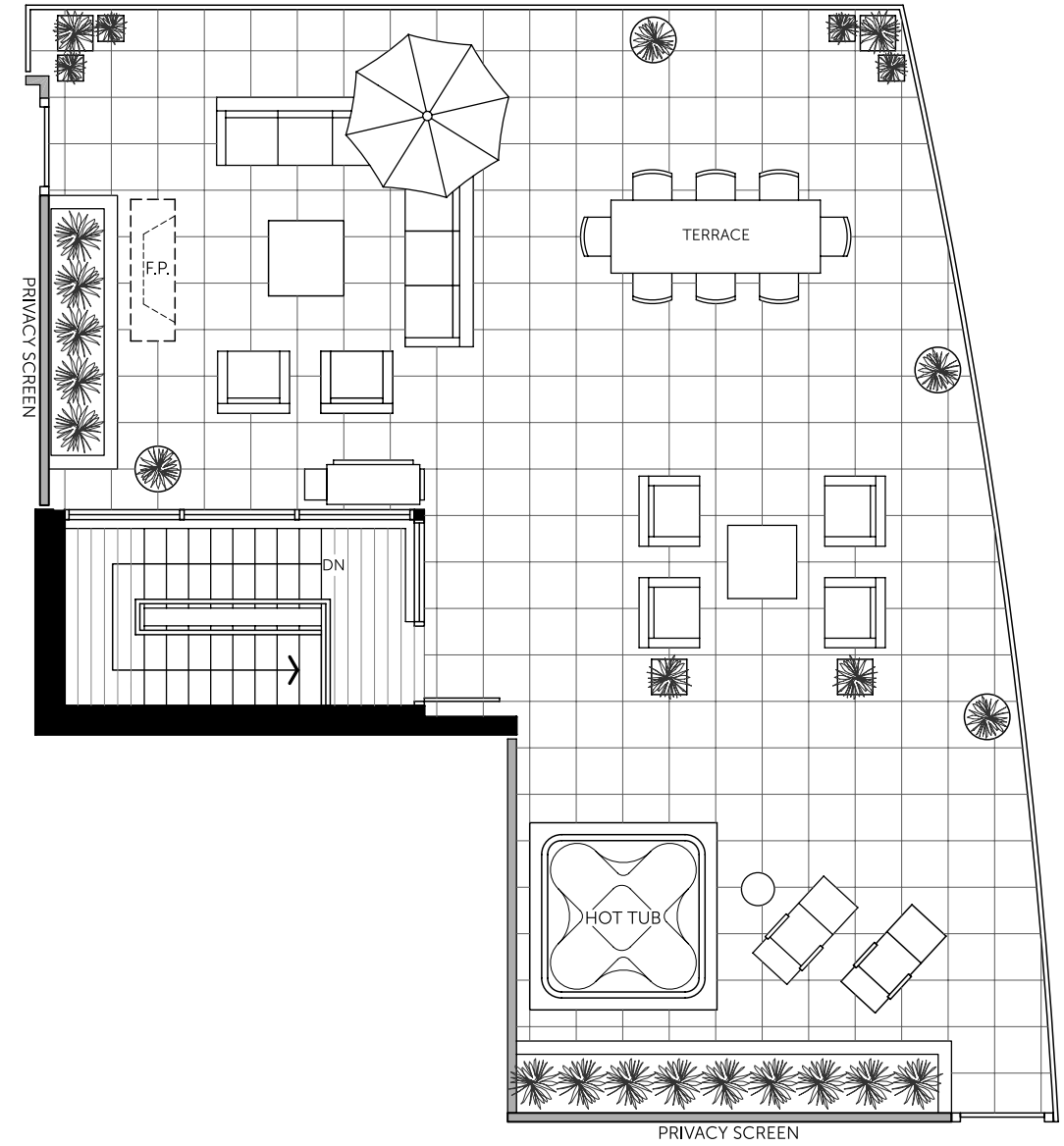
Units: 2403

Hot tub and outdoor fireplace are upgrade option only. Dimensions, square footage, floor plates and floor plans are approximate only. The developer reserves the right without notice to make modifications to dimensions, square footage, floorplans, floor plates, landscaping design, project design, materials and specifications to maintain the high standard of this development. The Developer may also make such further modifications as are permitted by the disclosure statement and the contract of purchase and sale between the purchaser and developer. E.&O.E.

MAIN FLOOR



ROOF DECK



Plan PH4  
2 Bedroom + Den

Living: 1,775 SQ.FT. (approx.)  
Outdoor: 1,670 SQ.FT. (approx.)

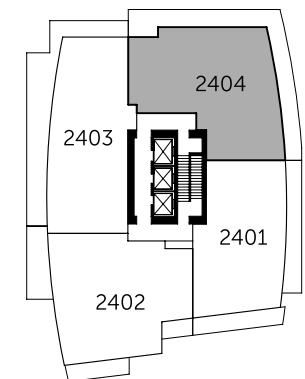
Units: 2404

CENTREVIEW

Hot tub and outdoor fireplace are upgrade option only. Dimensions, square footage, floor plates and floor plans are approximate only. The developer reserves the right without notice to make modifications to dimensions, square footage, floorplans, floor plates, landscaping design, project design, materials and specifications to maintain the high standard of this development. The Developer may also make such further modifications as are permitted by the disclosure statement and the contract of purchase and sale between the purchaser and developer. E.&O.E.

List of Appliances

- ① 36" Integrated Fhiaba Refrigerator
- ② 36" Fulgor Milano Gas Cooktop
- ③ 36" Faber Cristal Slim Line Hoodfan
- ④ 30" Fulgor Milano Convection Oven
- ⑤ Integrated Blomberg Dishwasher
- ⑥ Panasonic Microwave with Trim Kit
- ⑦ Built-in Jenn-Air Coffee Maker



24th Floor

