

**CENTREVIEW**

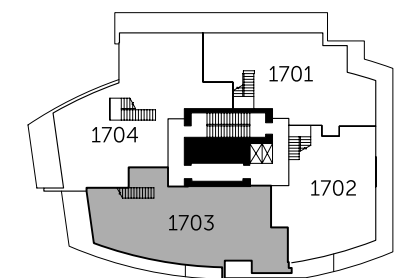
## Plan PH3 2 Bedroom + Storage

Living: 1,630 SQ.FT. (approx.)  
Outdoor: 1,405 SQ.FT. (approx.)

Units: 1703

### List of Appliances

- ① 36" Integrated Fhiaba Refrigerator
- ② 36" Fulgor Milano Gas Cooktop
- ③ 36" Faber Cristal Slim Line Hoodfan
- ④ 30" Fulgor Milano Convection Oven
- ⑤ Built-in Jenn-Air Coffee Maker
- ⑥ Panasonic Microwave with Trim Kit
- ⑦ Integrated Blomberg Dishwasher

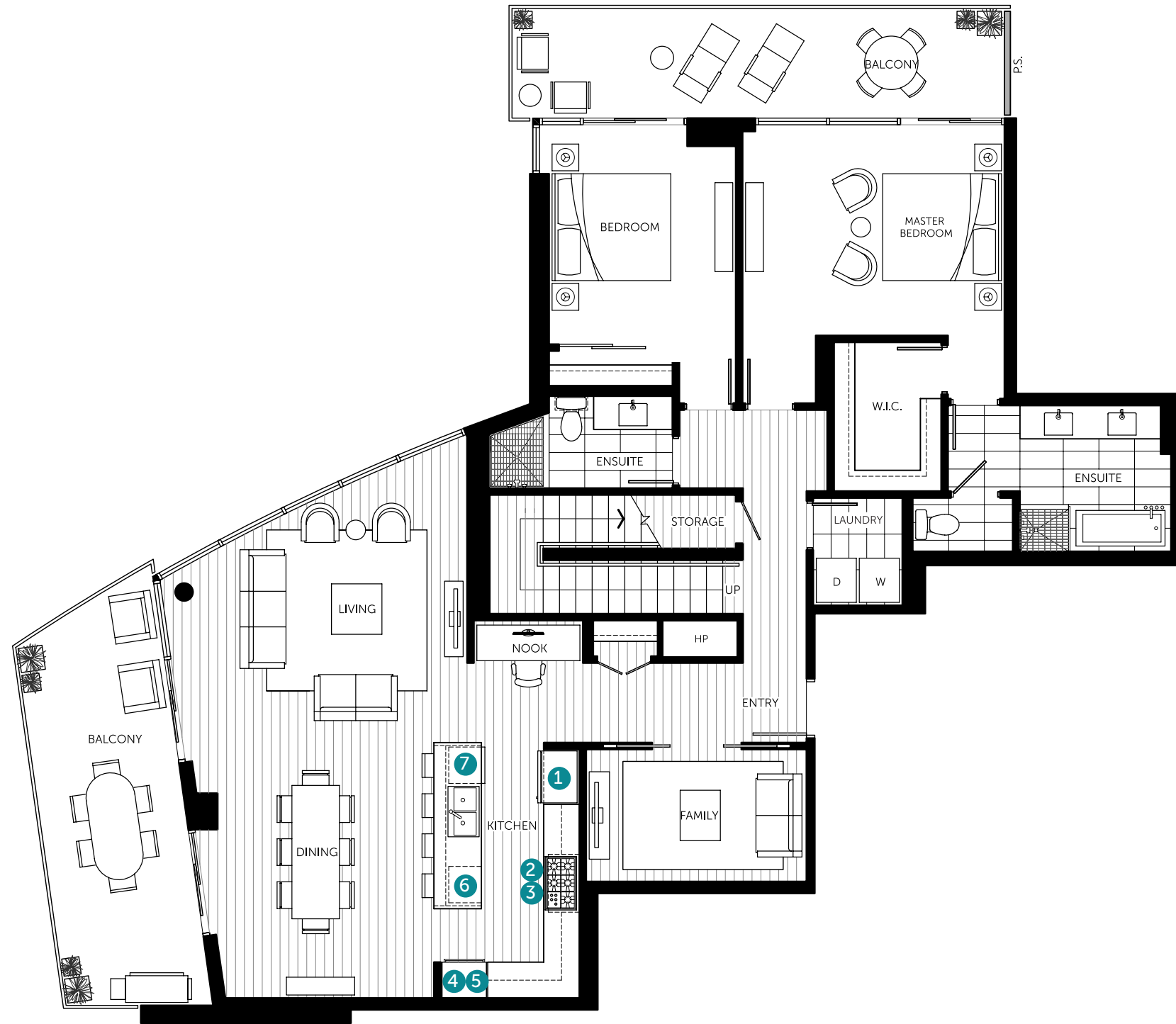


17th Floor

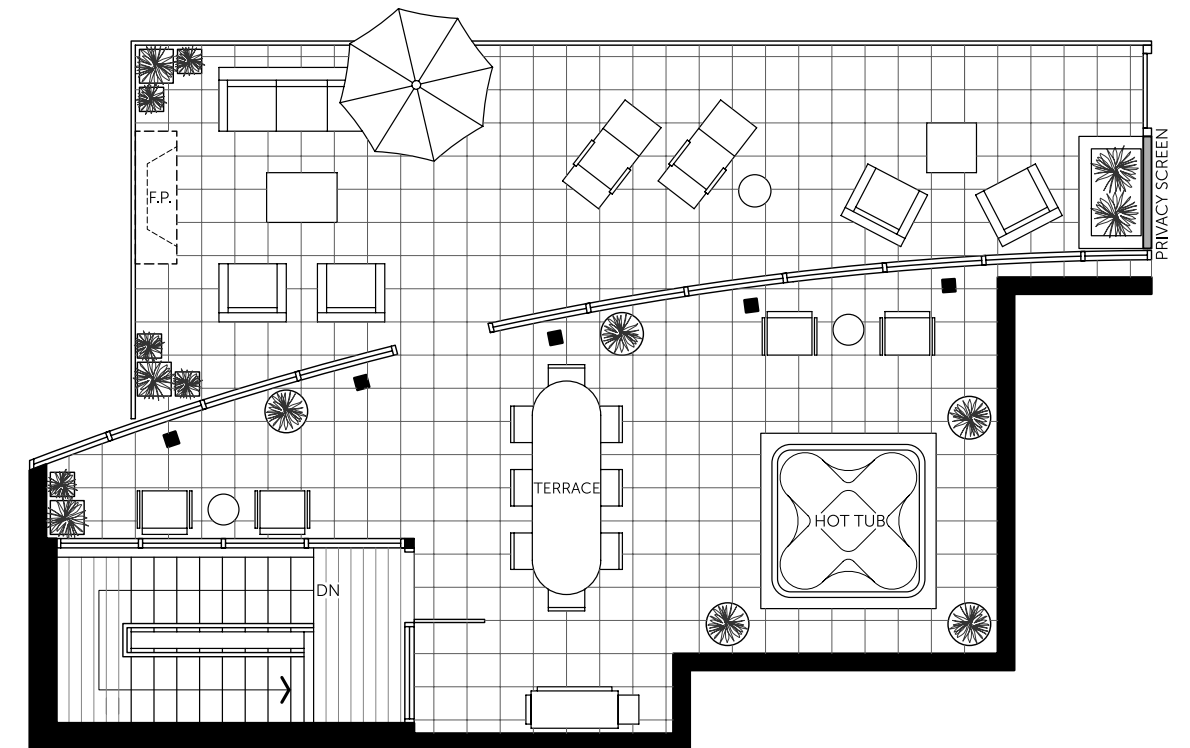


Hot tub and outdoor fireplace are upgrade option only. Dimensions, square footage, floor plates and floor plans are approximate only. The developer reserves the right without notice to make modifications to dimensions, square footage, floorplans, floor plates, landscaping design, project design, materials and specifications to maintain the high standard of this development. The Developer may also make such further modifications as are permitted by the disclosure statement and the contract of purchase and sale between the purchaser and developer. E.&O.E.

MAIN FLOOR



ROOF DECK



**CENTREVIEW**

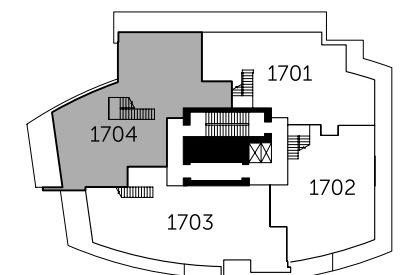
Plan PH4  
2 Bedroom + Family

Living: 1,790 SQ.FT. (approx.)  
Outdoor: 1,255 SQ.FT. (approx.)

Units: 1704

List of Appliances

- ① 36" Integrated Fhiaba Refrigerator
- ② 36" Fulgor Milano Gas Cooktop
- ③ 36" Faber Cristal Slim Line Hoodfan
- ④ 30" Fulgor Milano Convection Oven
- ⑤ Built-in Jenn-Air Coffee Maker
- ⑥ Panasonic Microwave with Trim Kit
- ⑦ Integrated Blomberg Dishwasher



17th Floor



Hot tub and outdoor fireplace are upgrade option only. Dimensions, square footage, floor plates and floor plans are approximate only. The developer reserves the right without notice to make modifications to dimensions, square footage, floorplans, floor plates, landscaping design, project design, materials and specifications to maintain the high standard of this development. The Developer may also make such further modifications as are permitted by the disclosure statement and the contract of purchase and sale between the purchaser and developer. E.&O.E.